

## How to execute TTInstaller for macOS<sup>1</sup> (Common steps)

Creation date : 2024-04-12

TTInstaller for macOS can be executed on PC which is connected to the Campus Network. TTInstaller for macOS can not be executed on PC which is not connected to the Campus Network.

TTInstaller for macOS was developed to be executed on the below-mentioned OS.  
macOS 10.14 or later

- (1) Set the clock to the right time.

<Reference>

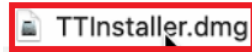
Mac で日付や時刻が間違っている場合

<https://support.apple.com/ja-jp/HT203413>

If the date or time is wrong on your Mac

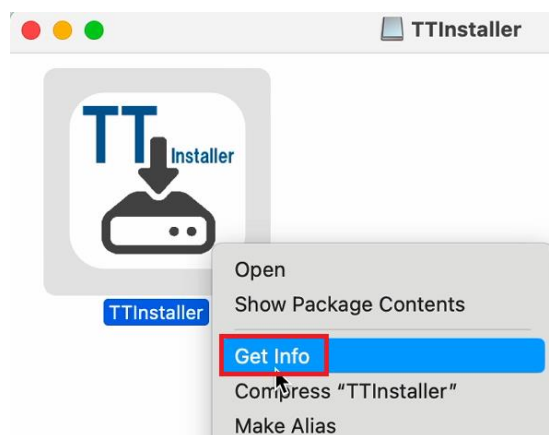
<https://support.apple.com/en-us/HT203413>

- (2) Double-click TTInstaller for macOS.



- (3) If the PC is Mac computers with Apple silicon<sup>2</sup>, follow (3).1 - (3).2.<sup>3</sup>

(3).1 Control-click "TTInstaller", then choose Get Info from the short cut menu. Click Get Info.

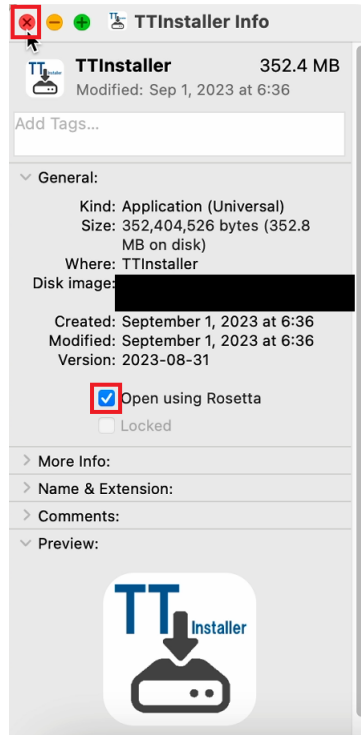


<sup>1</sup> Formerly known as TTInstaller for Mac OS X

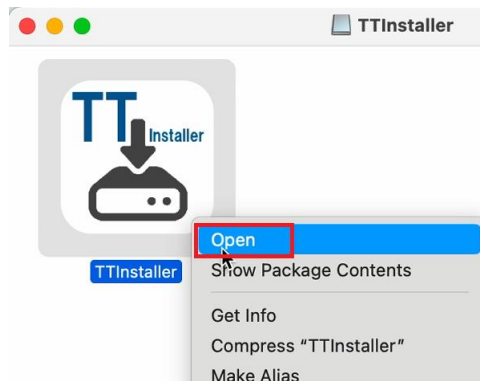
<sup>2</sup> Mac computers with Apple silicon <https://support.apple.com/en-us/HT211814>

<sup>3</sup> If you need to install Rosetta on your Mac <https://support.apple.com/en-us/HT211861>

(3).2 If [Open using Rosetta] is not checked, check [Open using Rosetta], and click the red close button.



(4) Control-click "TTInstaller", then choose Open from the shortcut menu. Click Open.<sup>4</sup>



4

Open a Mac app from an unidentified developer

<https://support.apple.com/guide/mac-help/mh40616/10.14/mac/10.14>

Open a Mac app from an unidentified developer

<https://support.apple.com/guide/mac-help/mh40616/10.15/mac/10.15>

Open a Mac app from an unidentified developer

<https://support.apple.com/guide/mac-help/mh40616/11.0/mac/11.0>

Open a Mac app from an unidentified developer

<https://support.apple.com/guide/mac-help/mh40616/12.0/mac/12.0>

Open a Mac app from an unidentified developer

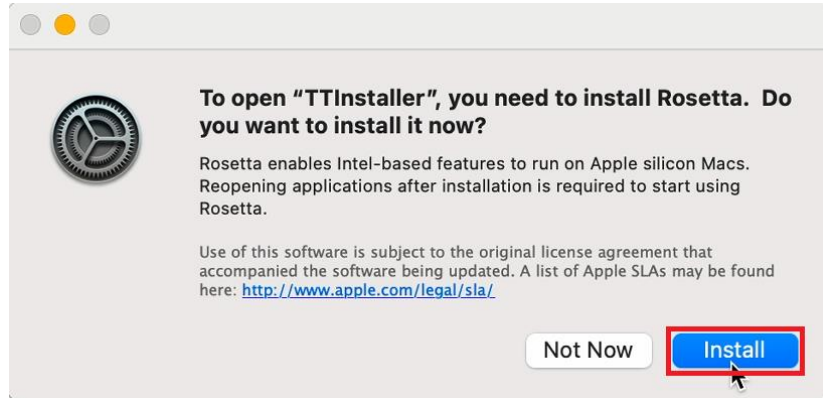
<https://support.apple.com/guide/mac-help/mh40616/13.0/mac/13.0>

Open a Mac app from an unidentified developer

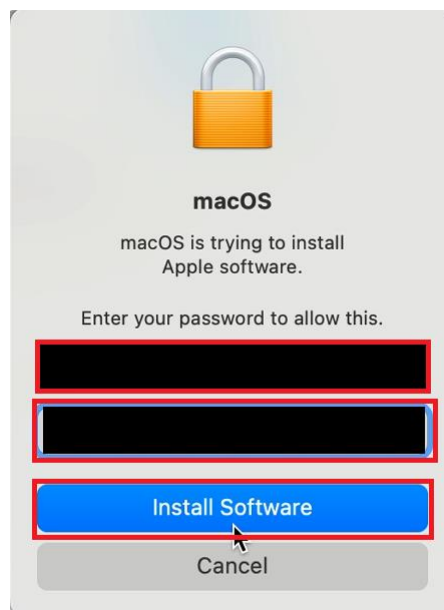
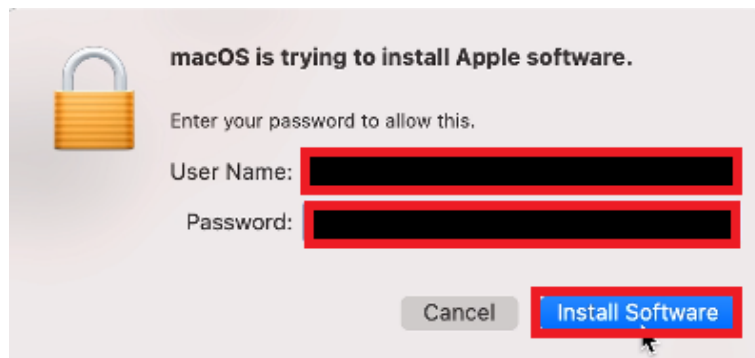
<https://support.apple.com/guide/mac-help/mh40616/14.0/mac/14.0>

(5) If you receive the message: *To open "TTInstaller", you need to install Rosetta. Do you want to install it now?*, follow (5).1 - (5).3.

(5).1 Click [Install].

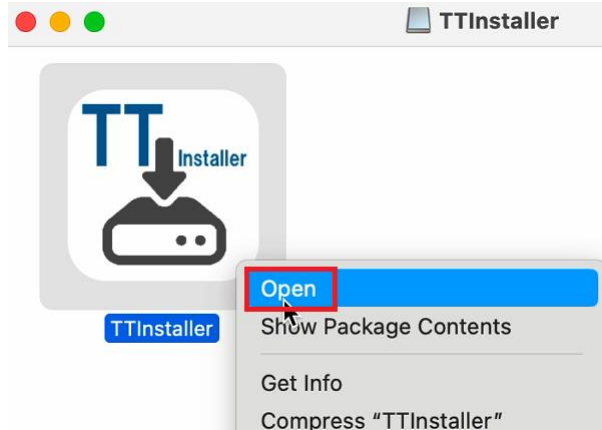


(5).2 If you receive the message: *macOS is trying to install Apple software.*, enter administrator<sup>5</sup> name and password, and click [Install Software].



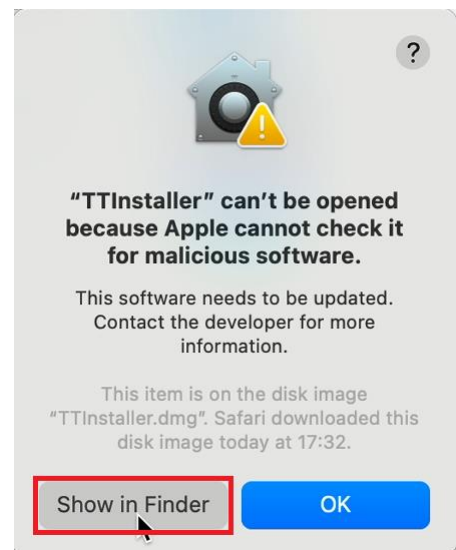
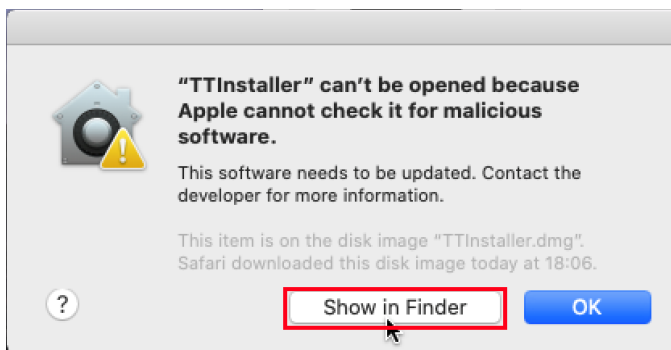
<sup>5</sup> administrator <https://support.apple.com/guide/mac-help/aside/glosccdf7f3c>

(5.3) Control-click "TTInstaller", then choose Open from the shortcut menu. Click Open.

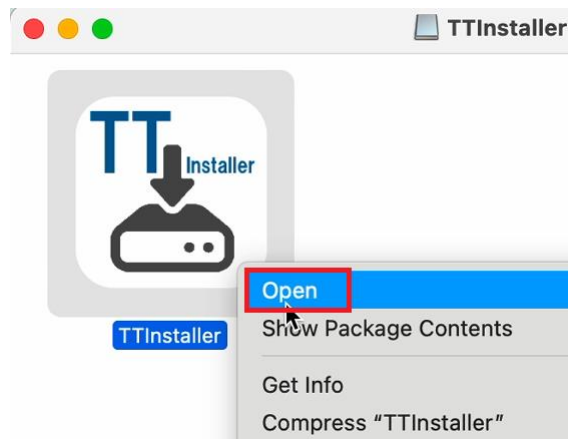


(6) If you receive the message: *"TTInstaller" can't be opened because Apple cannot check it for malicious software.*, and if you don't see the [Open] button, follow (6.1) - (6.2).

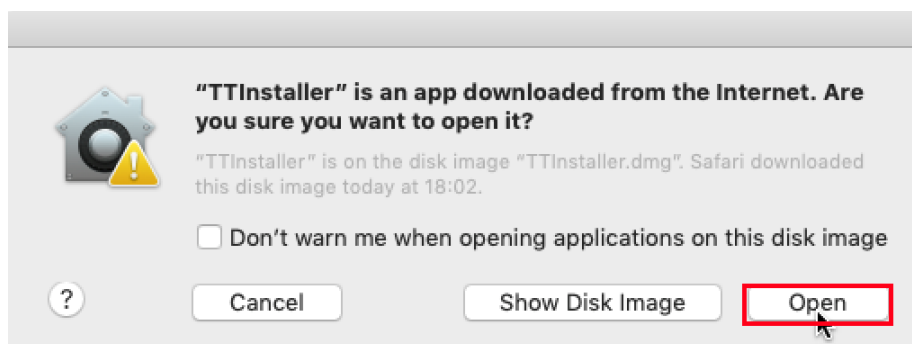
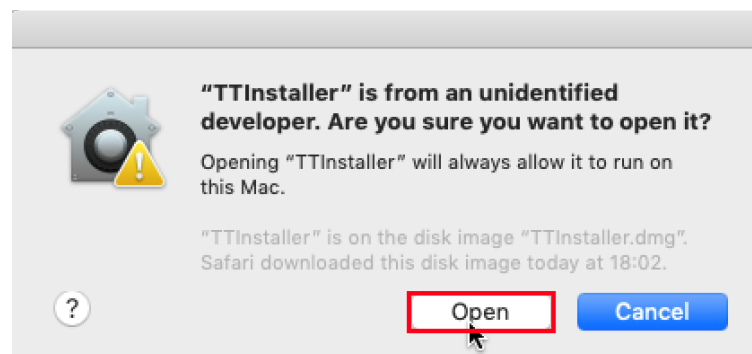
(6.1) Click [Show in Finder].

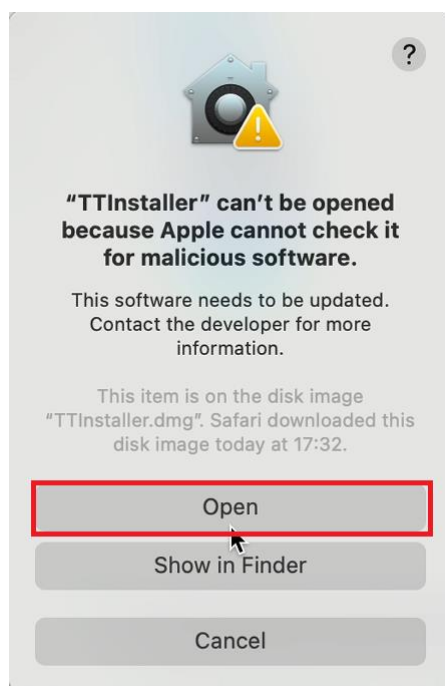
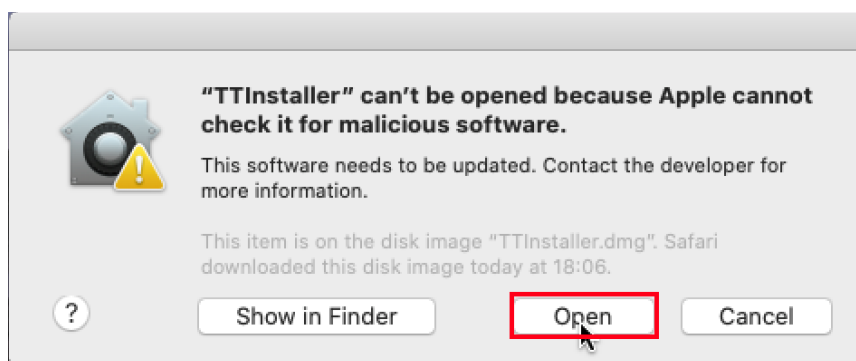


(6.2) Control-click "TTInstaller", then choose Open from the shortcut menu. Click Open.



(7) If you receive the message: *"TTInstaller" is from an unidentified developer. Are you sure you want to open it?*, or if you receive the message: *"TTInstaller" is an app downloaded from the Internet. Are you sure you want to open it?*, or if you receive the message: *"TTInstaller" can't be opened because Apple cannot check it for malicious software.*, click [Open].

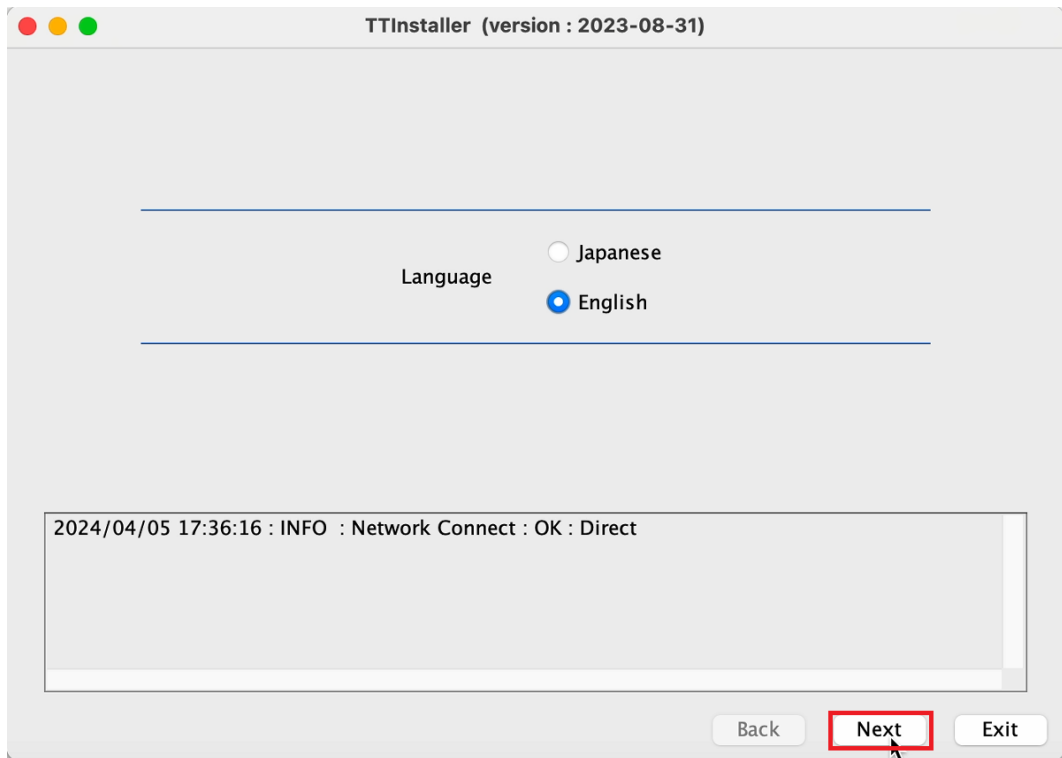




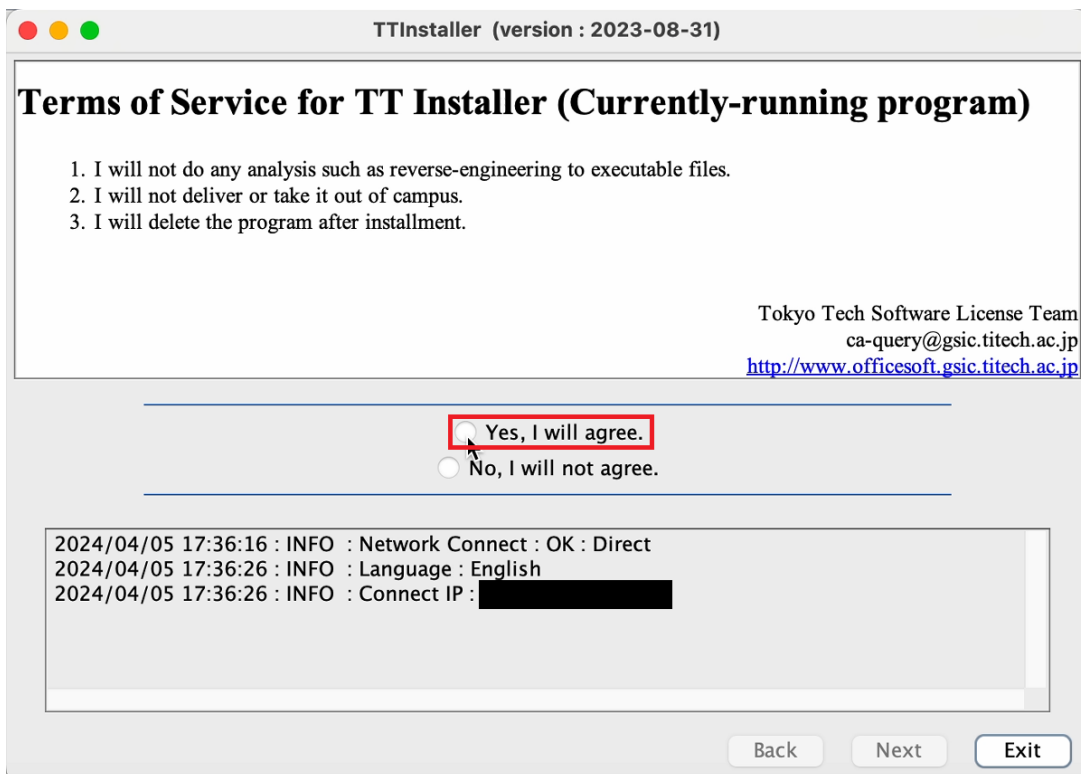
(8) Click [English].



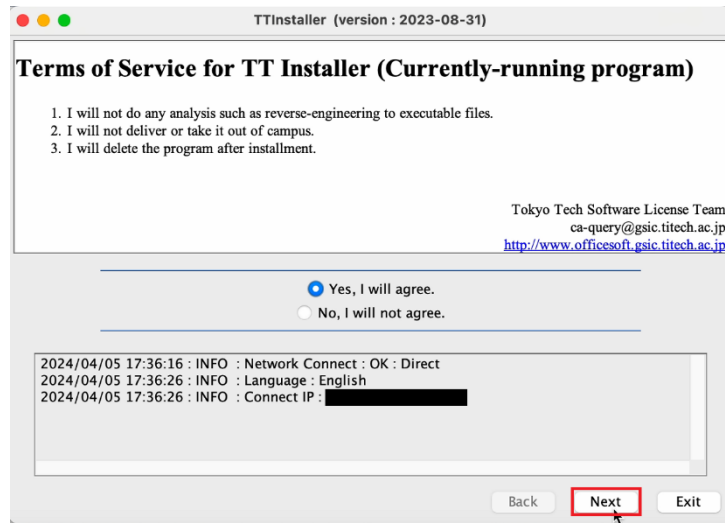
(9) Click [Next].



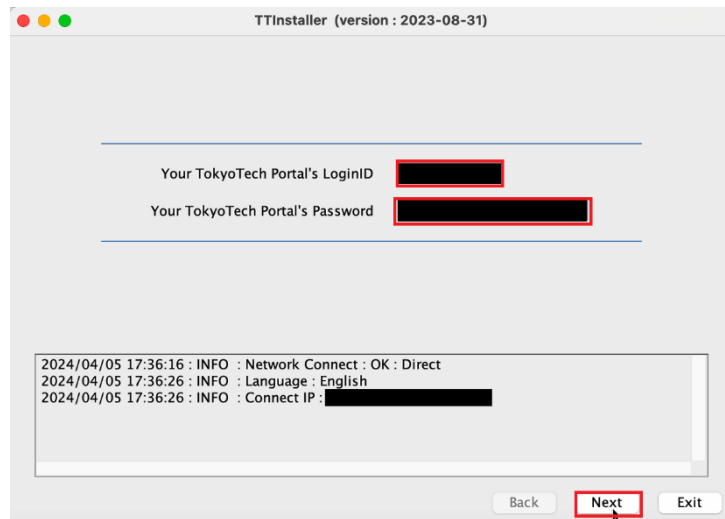
(10) Click [Yes, I will agree.].



(11) Click [Next].



(12) Type Your TokyoTech Portal's LoginID<sup>67</sup> and Your TokyoTech Portal's Password<sup>8</sup>, and click [Next].



<sup>6</sup> You need to type Your TokyoTech Portal's LoginID of your account which was used when you downloaded TTInstaller for macOS. If more than 24 hours had passed since you downloaded TTInstaller for macOS, you need to download TTInstaller for macOS again.

<sup>7</sup> The "Your TokyoTech Portal's LoginID" is the string which you enter in the "Account" field when you log in to the TokyoTech Portal using a password and a matrix code.

<Reference>

Matrix authentication

<https://portal.titech.ac.jp/new-en/ezguide/matrix-login.html>

<sup>8</sup> The "Your TokyoTech Portal's Password" is the string which you enter in the "Password" field when you log in to the TokyoTech Portal using a password and a matrix code.

<Reference>

Matrix authentication

<https://portal.titech.ac.jp/new-en/ezguide/matrix-login.html>