

Be sure to go to the following page and check terms and conditions for how you can use the software.

Notandum(Windows earlier version)

http://www.officesoft.gsic.titech.ac.jp/pdf/Notandum_Windows_earlier_version_English.pdf

1 Check system requirements

Go to the following page and check that the university-owned PC on which you want to install Windows 7 Enterprise Service Pack 1 meets system requirements. If the university-owned PC on which you want to install Windows 7 Enterprise Service Pack 1 doesn't meet system requirements, meet system requirements.

Windows 7 system requirements

<http://windows.microsoft.com/en-us/windows7/products/system-requirements>

2 Decide who to be PC Administrator

<Reference>

PC Administrator

http://www.officesoft.gsic.titech.ac.jp/pdf/PC_Administrator_en.pdf

3 Obtain a Passcode

PC Administrator who was decided at "2 Decide who to be PC Administrator" obtains a Passcode.

パスコードの取得について / For information about obtaining the Passcode

<http://www.officesoft.gsic.titech.ac.jp/pdf/passcode.pdf>

If person who will follow the following steps is not PC Administrator who was decided at "2 Decide who to be PC Administrator", PC Administrator turn over the information of PC Administrator's mail address of The Tokyo Tech Mail System and Passcode to person who will follow the following steps.

4 Make installation media to install Windows 7 Enterprise Service Pack 1¹

4.1

If the OS of the PC which are used to download ISO file which you need to make installation media to install Windows 7 Enterprise Service Pack 1 is Windows, go to the following page and download TTInstaller for Windows.

TTInstaller(Windows 版)をダウンロードする方法 / How to download TTInstaller for Windows

http://www.officesoft.gsic.titech.ac.jp/pdf/How_to_download_TTInstaller_for_Windows.pdf

If the OS of the PC which are used to download ISO file which you need to make installation media to install Windows 7 Enterprise Service Pack 1 is Mac OS X, go to the following page and download TTInstaller for Mac OS X.

TTInstaller(Mac OS X 版)をダウンロードする方法 / How to download TTInstaller for Mac OS X

http://www.officesoft.gsic.titech.ac.jp/pdf/How_to_download_TTInstaller_for_Mac_OS_X.pdf

4.2

4.2.1

If TTInstaller for Windows was downloaded at 4.1, follow steps in the following page.

How to execute TTInstaller for Windows (Common steps)

http://www.officesoft.gsic.titech.ac.jp/pdf/How_to_execute_TTInstaller_for_Windows_common_steps_en.pdf

If TTInstaller for Mac OS X was downloaded at 4.1, follow steps in the following page.

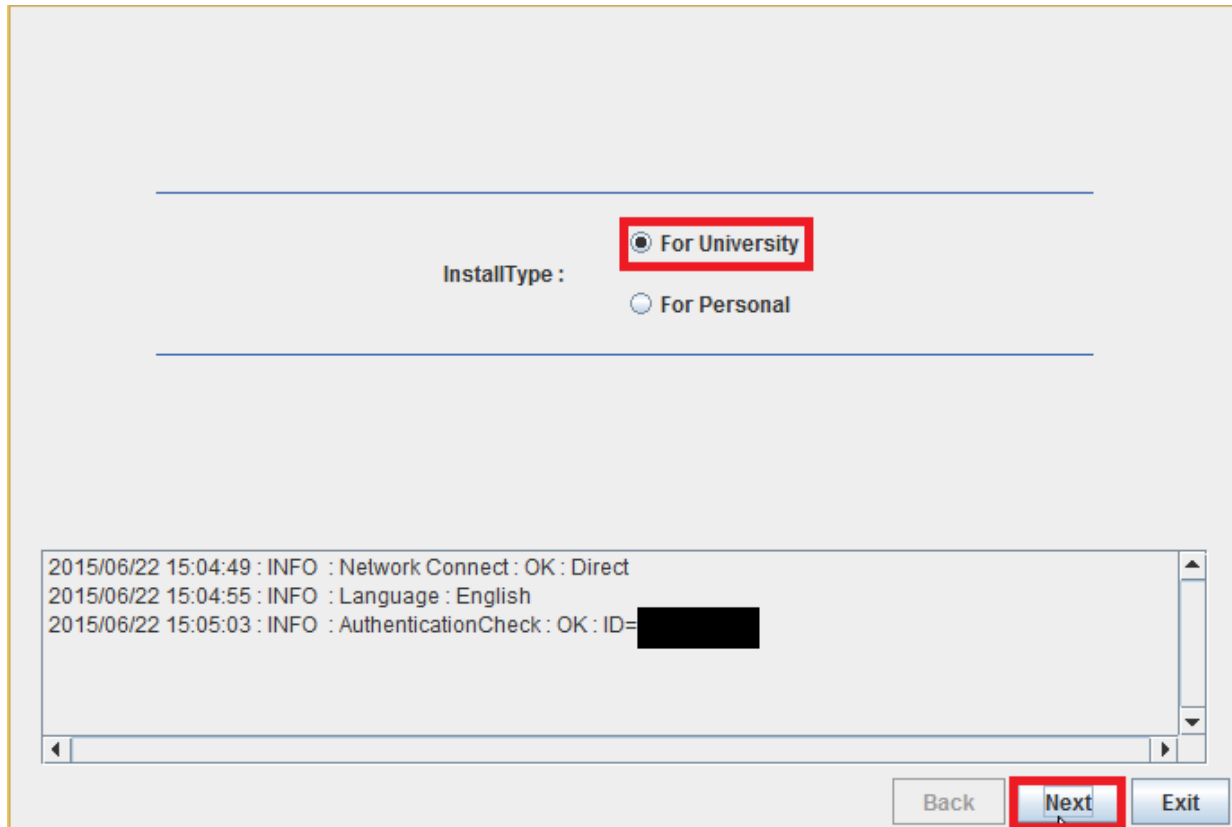
How to execute TTInstaller for Mac OS X (Common steps)

http://www.officesoft.gsic.titech.ac.jp/pdf/How_to_execute_TTInstaller_for_Mac_OS_X_common_steps_en.pdf

4.2.2

Click [For University], and click [Next].

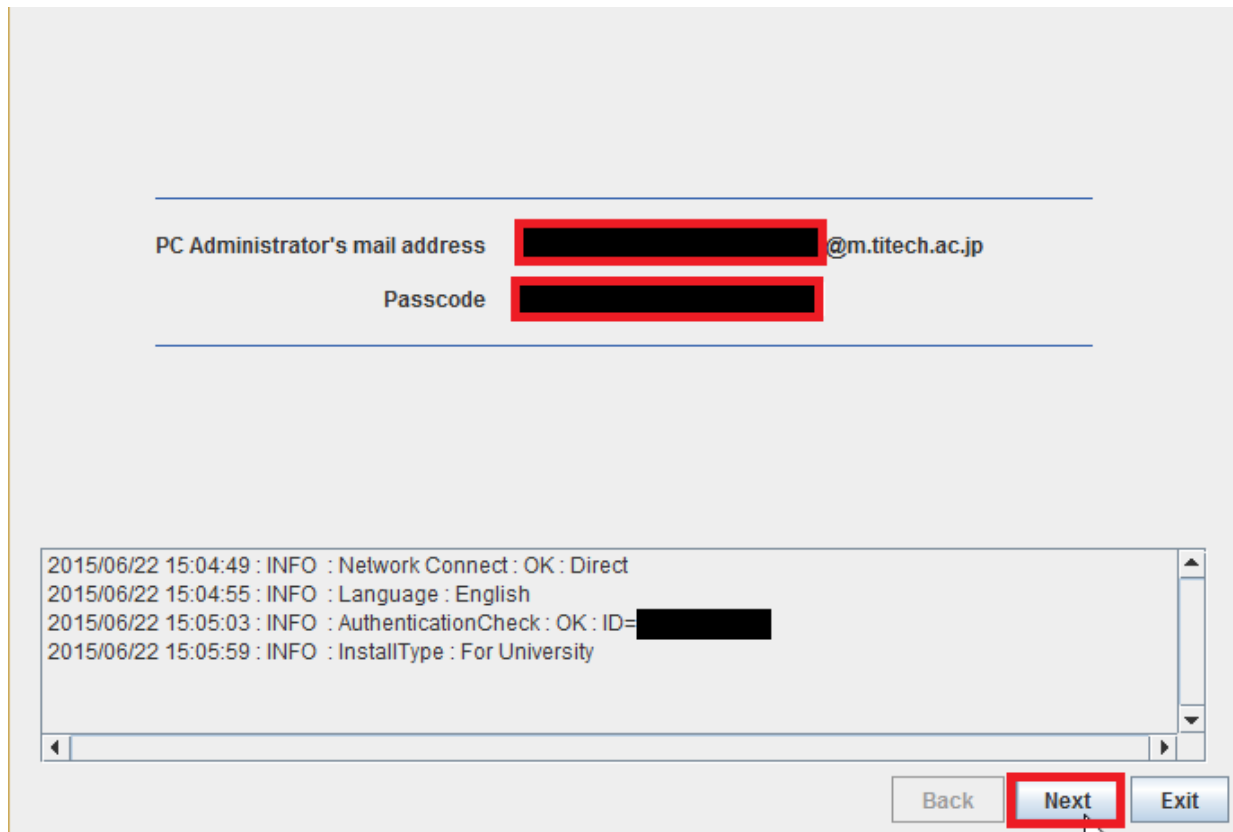
¹ You can borrow installation media to install Windows 7 Enterprise Service Pack 1 as an alternative for "4 Make installation media to install Windows 7 Enterprise Service Pack 1". If you want to borrow installation media to install Windows 7 Enterprise Service Pack 1 go to the following page.
http://www.officesoft.gsic.titech.ac.jp/en/windows/Windows_Installation_Disc_Lending.html



4.2.3

Type the mail address of The Tokyo Tech Mail System of PC Administrator who was decided at “2 Decide who to be PC Administrator” and the Passcode² which was obtained at “3 Obtain a Passcode”, and click [Next].

² If the Passcode which was obtained at “3 Obtain a Passcode” is invalid, follow the operation of “3 Obtain a Passcode” again and type it.



4.2.4

Check the row which fulfills following conditions, and click [Next].

- The Language column of the row is the language you want to install.
- If you want to install the 32-bit Operating System, the Explain column of the row contains “32bit”. If you want to install the 64-bit Operating System, the Explain column of the row contains “64bit”.
- The SoftwareName column of the row is “Microsoft Windows”.
- The Version column of the row is “7 Enterprise SP1”.

Check	OSName	Language	Explain	FileSize	Maker
<input type="checkbox"/>	Windows	English	Microsoft Office 2013	619MB	Microsoft
<input type="checkbox"/>	Windows	English	Microsoft Office 2010	660MB	Microsoft
<input type="checkbox"/>	Windows	English	Windows 8.1 Enterprise : 32bit : ISO file	2.51GB	Microsoft
<input type="checkbox"/>	Windows	English	Windows 8.1 Enterprise : 64bit : ISO file	3.32GB	Microsoft
<input checked="" type="checkbox"/>	Windows	English	Windows 7 Enterprise SP1 : 32bit : ISO file	2.14GB	Microsoft
<input type="checkbox"/>	Windows	English	Windows 7 Enterprise SP1 : 64bit : ISO file	2.81GB	Microsoft
<input type="checkbox"/>	Windows	English	Anti-Virus Software for Client : 32bit	63MB	Symantec

For Client : Japanese
 For Client : English
 For Management Server

```

2015/06/22 15:04:49 : INFO : Network Connect : OK : Direct
2015/06/22 15:04:55 : INFO : Language : English
2015/06/22 15:05:03 : INFO : AuthenticationCheck : OK : ID=
2015/06/22 15:05:59 : INFO : InstallType : For University
2015/06/22 15:06:10 : INFO : PasscodeCheck : OK : ID=

```

Back **Next** Exit

4.2.5

Click [Next].

Notes on the Installing Software (Windows 7 Enterprise)

1. You can download a DVD image file (in ISO format) of Windows Vista from our website.
2. If you are using it as a physical medium, please use a writing-software applicable to ISO format and use it by writing onto DVD.
3. Please install windows 7, and execute this TTInstaller with the option of "Windows 7 ActivationTool" on Windows 7.
4. For the rental service of an install DVD, please visit our website.

Tokyo Tech Software License Team
ca-query@gsic.titech.ac.jp
<http://www.officesoft.gsic.titech.ac.jp>

```

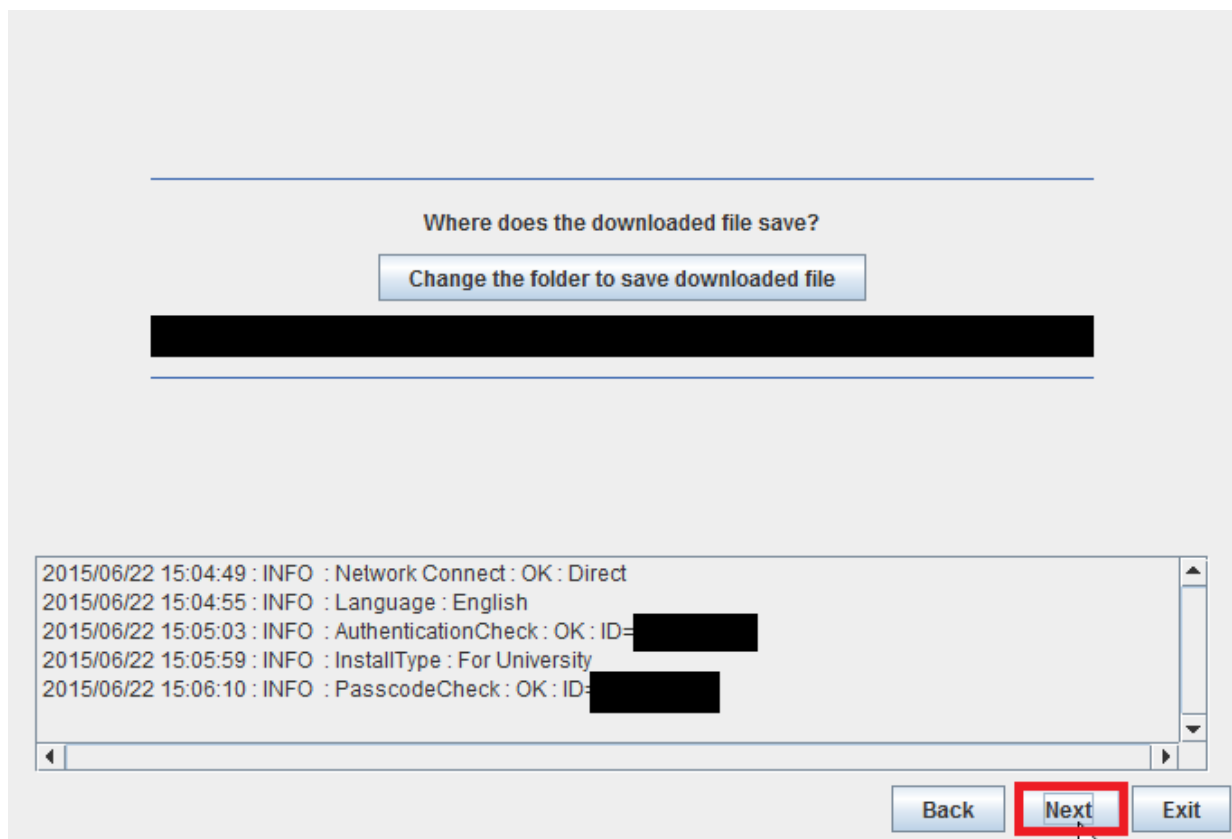
2015/06/22 15:04:49 : INFO : Network Connect : OK : Direct
2015/06/22 15:04:55 : INFO : Language : English
2015/06/22 15:05:03 : INFO : AuthenticationCheck : OK : ID=
2015/06/22 15:05:59 : INFO : InstallType : For University
2015/06/22 15:06:10 : INFO : PasscodeCheck : OK : ID=

```

Back **Next** Exit

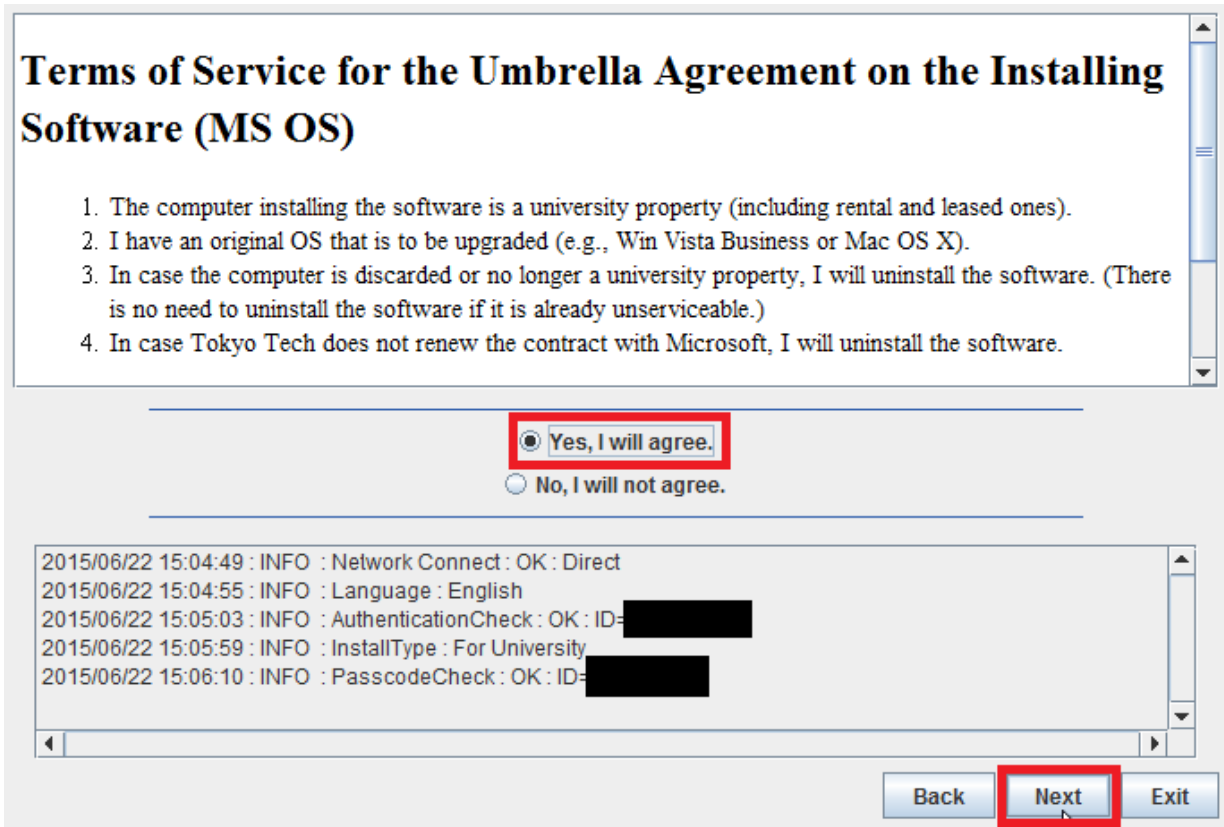
4.2.6

If you want to change the folder to save ISO file which you need to make in installation media to install Windows 7 Enterprise Service Pack 1, click [Change the folder to save downloaded file]. Click [Next].



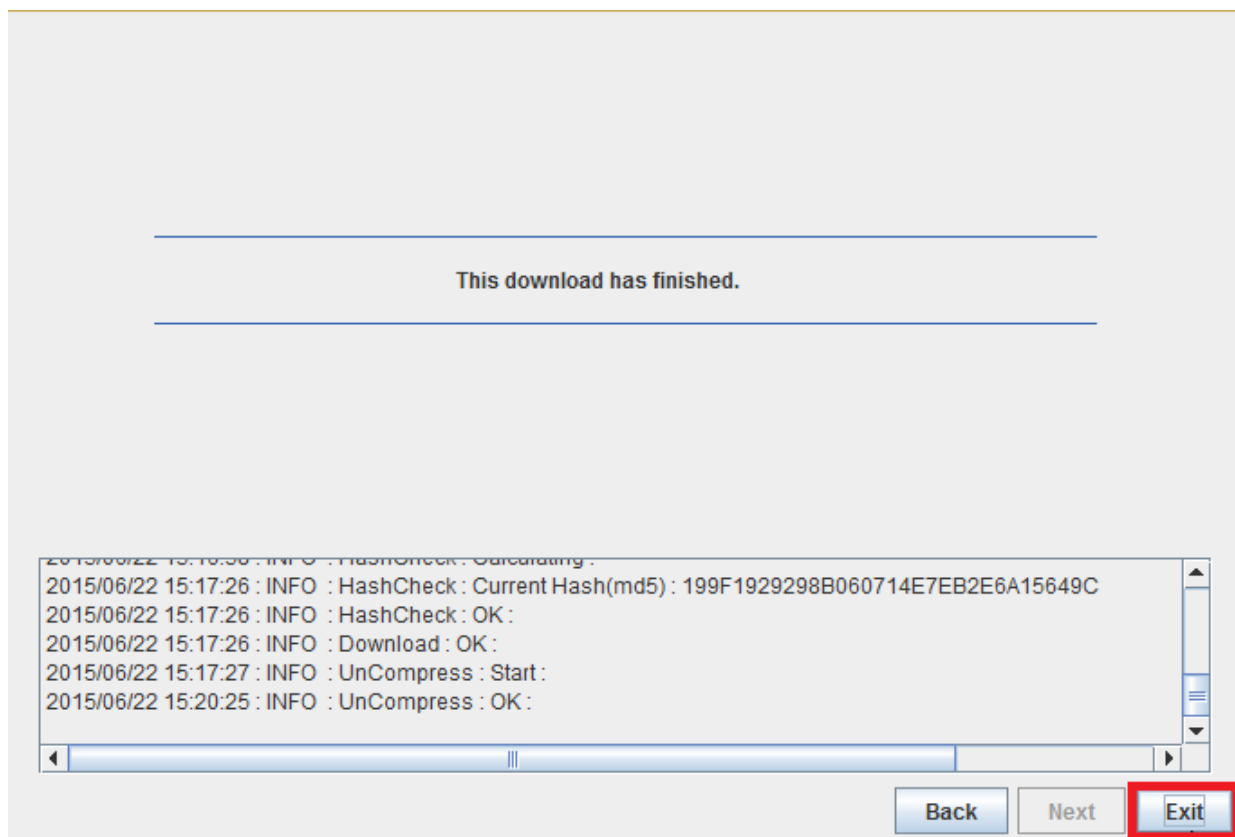
4.2.7

Click [Yes, I will agree.], and click [Next].



4.2.8

After seeing the message: *This download has finished.*, click [Exit].



4.3

Delete the TTInstaller which was downloaded at 4.1.

4.4

Make the installation media from the ISO file which was downloaded at 4.2.

<Reference>

ツールボックス: IT プロのための新製品

<https://technet.microsoft.com/ja-jp/magazine/2007.01.toolbox.aspx>

Toolbox: New Products for IT Pros

<https://technet.microsoft.com/en-us/magazine/2007.01.toolbox.aspx>

ISO ファイルから CD または DVD を書き込む

<http://windows.microsoft.com/ja-JP/windows7/Burn-a-CD-or-DVD-from-an-ISO-file>

Burn a CD or DVD from an ISO file

<http://windows.microsoft.com/en-US/windows7/Burn-a-CD-or-DVD-from-an-ISO-file>

Windows 7 ISO ファイルを DVD に書き込む

<https://support.microsoft.com/ja-jp/kb/977640>

Burning a Windows 7 ISO File on a DVD

<https://support.microsoft.com/en-us/kb/977640>

Disk Utility 12.x: ディスクイメージから CD または DVD を作成する

https://support.apple.com/kb/PH5824?locale=ja_JP

Disk Utility 12.x: Burn a disk image to a CD or DVD

https://support.apple.com/kb/PH5824?locale=en_US

hdiutil(1) Mac OS X Manual Page

<https://developer.apple.com/library/mac/documentation/Darwin/Reference/ManPages/man1/hdiutil.1.html>

drutil(1) Mac OS X Manual Page

<https://developer.apple.com/library/mac/documentation/Darwin/Reference/ManPages/>

man1/drutil.1.html

5 Install Windows 7 Enterprise Service Pack 1

Install Windows 7 Enterprise Service Pack 1 on the university-owned PC which met system requirements at “1 Check system requirements” by using the installation media which was made at “4 Make installation media to install Windows 7 Enterprise Service Pack 1”.

<Reference>

Windows 7 インストール ガイド

<https://technet.microsoft.com/ja-jp/windows/gg416903>

http://download.microsoft.com/download/A/4/F/A4F4EDE8-9734-4A1A-87E3-A49E43FF2F8C/Windows7_InstallGuide.pdf

Windows をインストールおよび再インストールする

[http://windows.microsoft.com/ja-jp/windows/installing-reinstalling-windows#1TC=windows-](http://windows.microsoft.com/ja-jp/windows/installing-reinstalling-windows#1TC=windows-7)

[7](http://windows.microsoft.com/ja-jp/windows/installing-reinstalling-windows#1TC=windows-7)

Installing and reinstalling Windows

[http://windows.microsoft.com/en-us/windows/installing-reinstalling-windows#1TC=windows-](http://windows.microsoft.com/en-us/windows/installing-reinstalling-windows#1TC=windows-7)

[s-7](http://windows.microsoft.com/en-us/windows/installing-reinstalling-windows#1TC=windows-7)

32 ビット版の Windows がインストールされているコンピューターに Windows 7 64 ビット版をインストールするには

<https://support.microsoft.com/ja-jp/kb/2387035>

6 Execute Windows 7 Activation Tool³

6.1

Follow steps in the following page.

TTInstaller(Windows 版)をダウンロードする方法 / How to download TTInstaller for

³ Before you follow this operation, you need to get the university-owned PC which was installed Windows 7 Enterprise Service Pack 1 at “5 Install Windows 7 Enterprise Service Pack 1” to the Internet. You need to follow this operation on it.

<Reference>

Windows 製品のライセンス認証で使用されるポート

<https://support.microsoft.com/ja-jp/kb/291983>

Ports That Are Used by Windows Product Activation

<https://support.microsoft.com/en-us/kb/291983>

Windows

http://www.officesoft.gsic.titech.ac.jp/pdf/How_to_download_TTInstaller_for_Windows.pdf

6.2

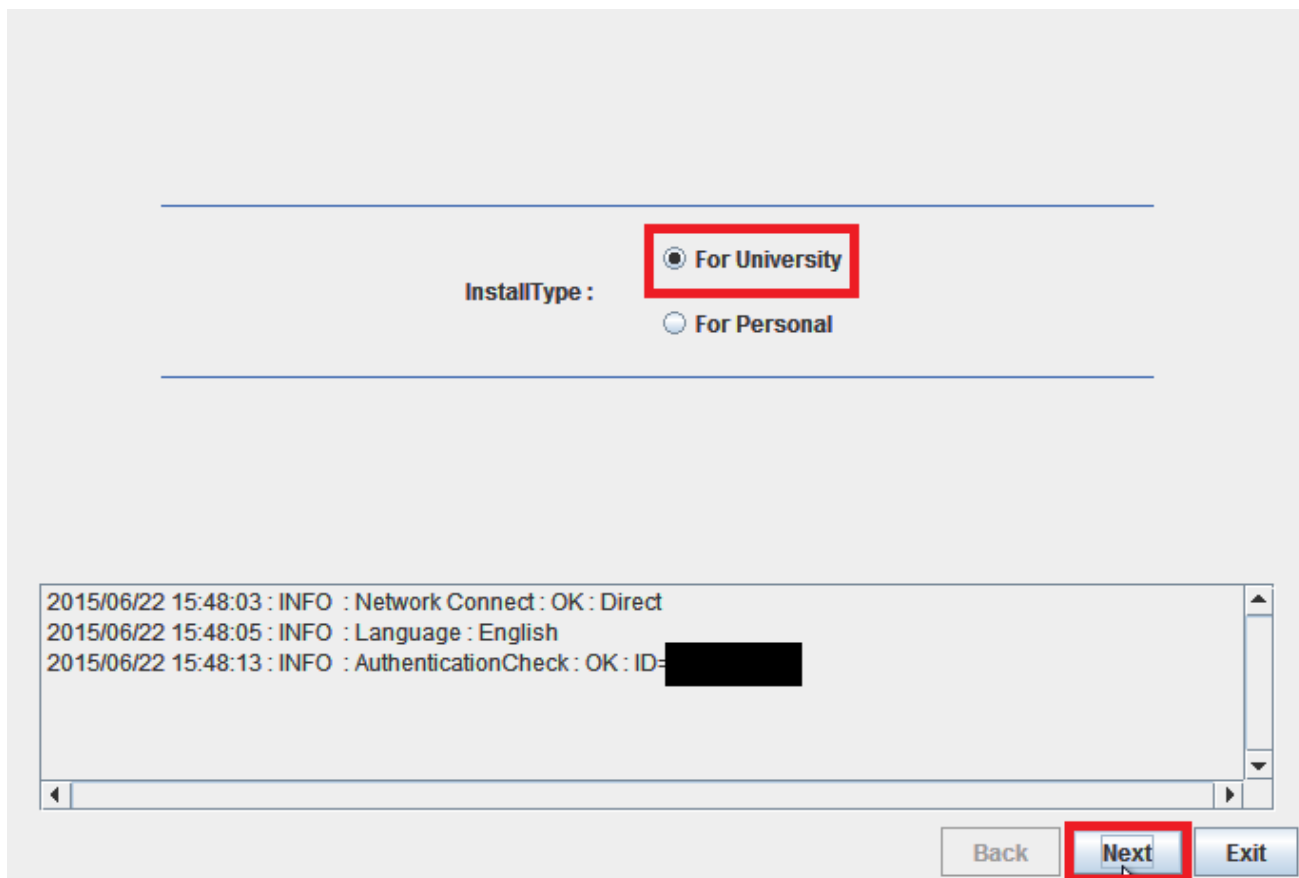
Follow steps in the following page.

How to execute TTInstaller for Windows (Common steps)

http://www.officesoft.gsic.titech.ac.jp/pdf/How_to_execute_TTInstaller_for_Windows_common_steps_en.pdf

6.3

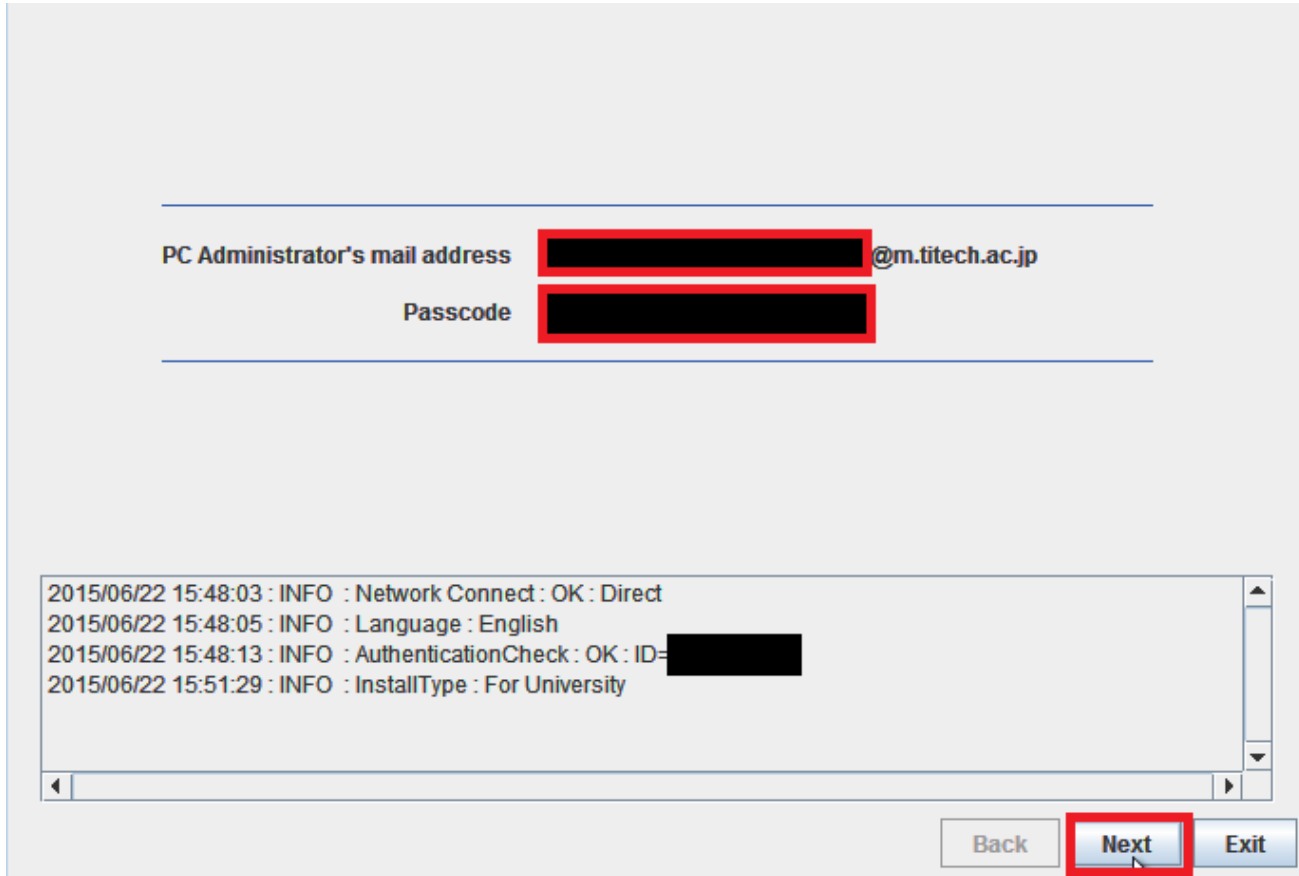
Click [For University], and click [Next].



6.4

Type the mail address of The Tokyo Tech Mail System of PC Administrator who was decided at “2 Decide who to be PC Administrator” and the Passcode⁴ which was obtained at “3 Obtain a Passcode”, and click [Next].

⁴ If the Passcode which was obtained at “3 Obtain a Passcode” is invalid, follow the operation of “3 Obtain a Passcode” again and type it.



6.5

Check the row the Explain column of which is “Windows 7 Enterprise : アクティベーションツール” or “Windows 7 Enterprise : Activation Tool”, and click [Next].

Check	OSName	Language	Explain	FileSize	Maker
<input type="checkbox"/>	Windows		Windows 8.1 Enterprise : Activation Tool	1MB	Microsoft
<input type="checkbox"/>	Windows	Japanese	Windows 8.1 Enterprise : 32bit : ISO file	2.55GB	Microsoft
<input type="checkbox"/>	Windows	Japanese	Windows 8.1 Enterprise : 64bit : ISO file	3.39GB	Microsoft
<input checked="" type="checkbox"/>	Windows		Windows 7 Enterprise : Activation Tool	1MB	Microsoft
<input type="checkbox"/>	Windows	Japanese	Windows 7 Enterprise SP1 : 32bit : ISO file	2.10GB	Microsoft
<input type="checkbox"/>	Windows	Japanese	Windows 7 Enterprise SP1 : 64bit : ISO file	2.79GB	Microsoft
<input type="checkbox"/>	Windows	Japanese	Anti-Virus Software for Client : 32bit	63MB	Symantec

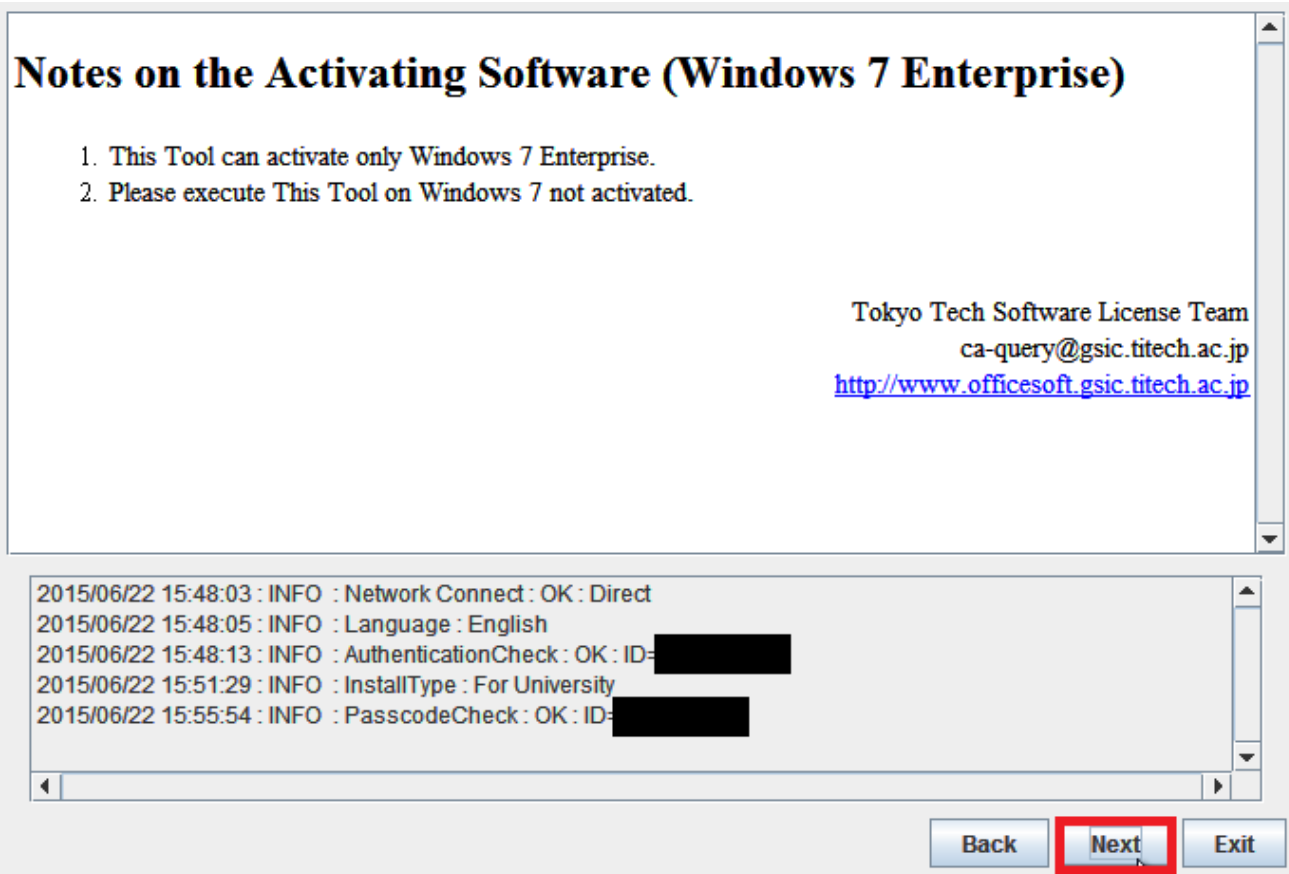
For Client : Japanese For Client : English For Management Server

```
2015/06/22 15:48:03 : INFO : Network Connect : OK : Direct
2015/06/22 15:48:05 : INFO : Language : English
2015/06/22 15:48:13 : INFO : AuthenticationCheck : OK : ID=
2015/06/22 15:51:29 : INFO : InstallType : For University
2015/06/22 15:55:54 : INFO : PasscodeCheck : OK : ID=
```

Back **Next** Exit

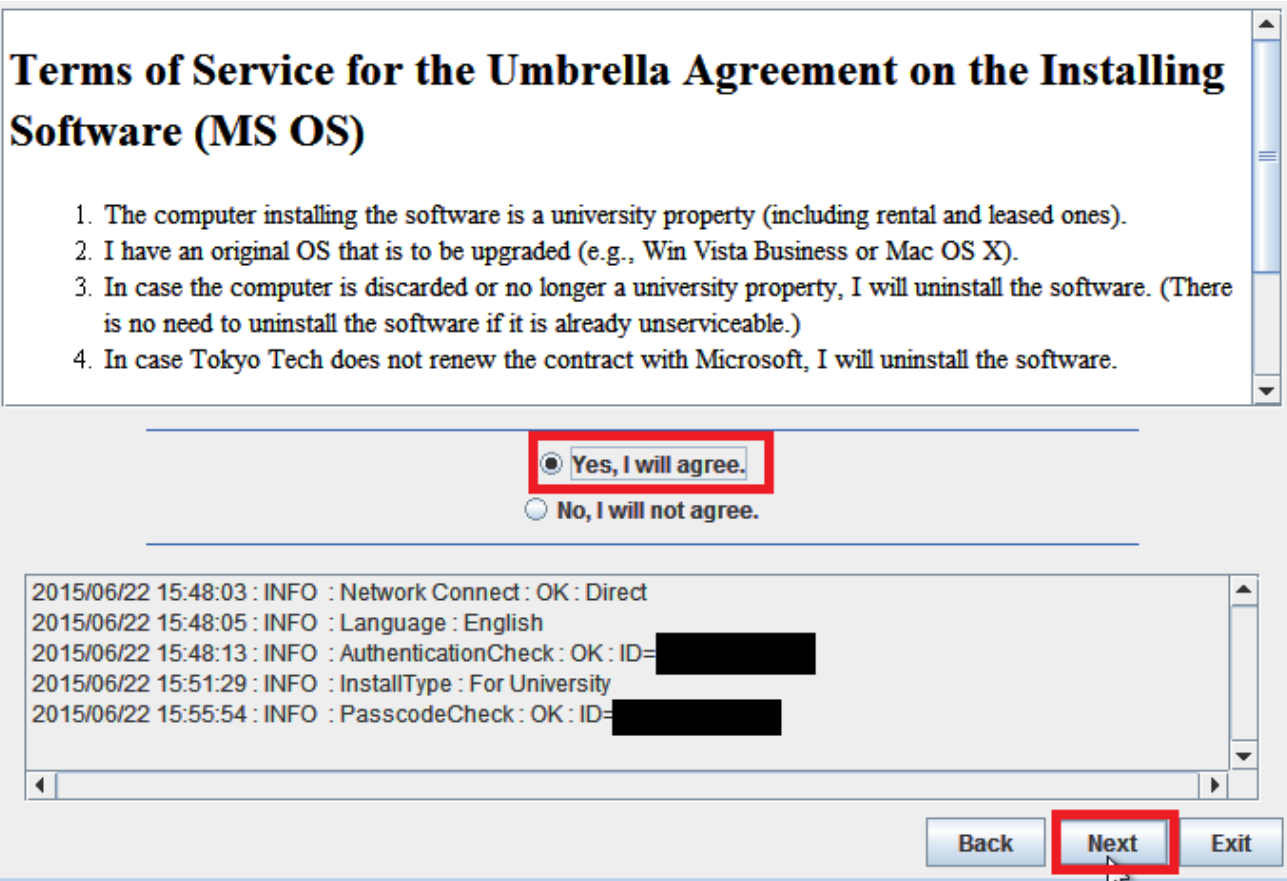
6.6

Click [Next].



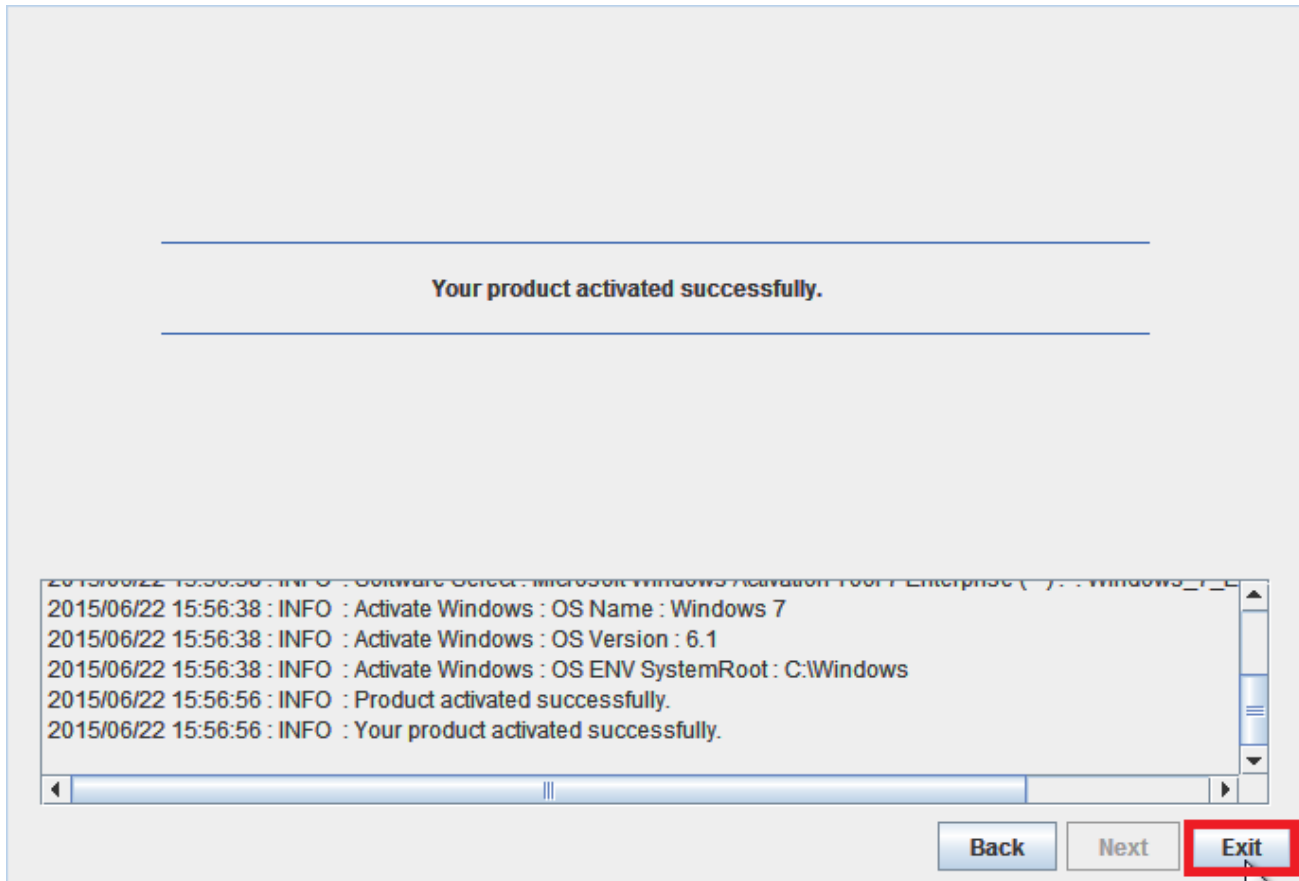
6.7

Click [Yes, I will agree.], and click [Next].



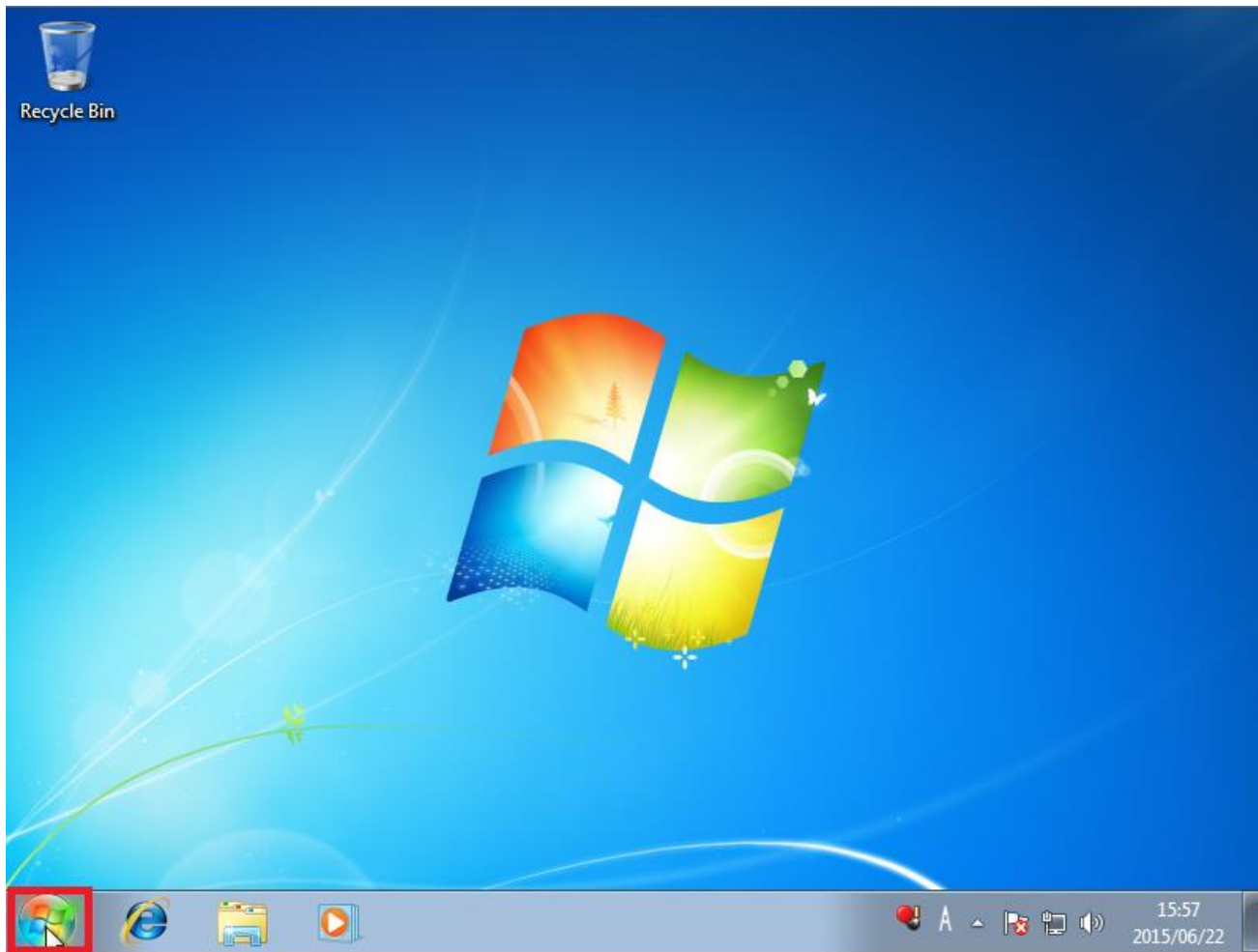
6.8

After seeing the message: *Your product activated successfully.*, click [Exit].



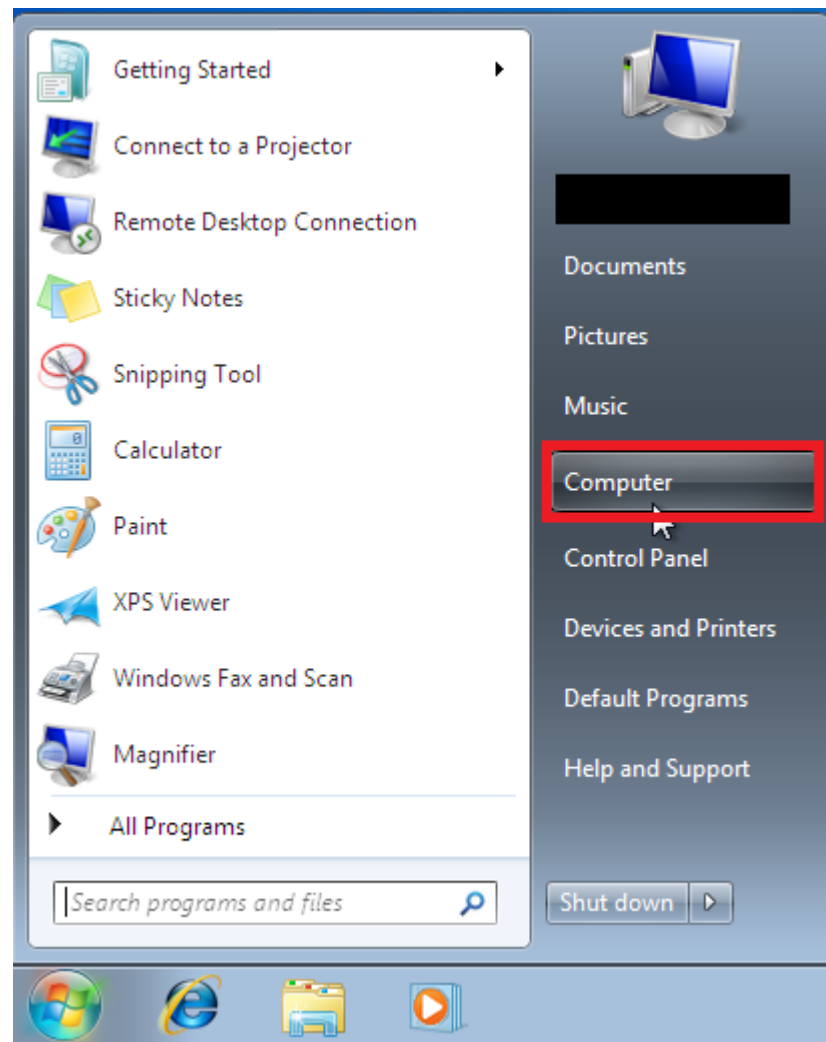
6.9

Click the Start button.



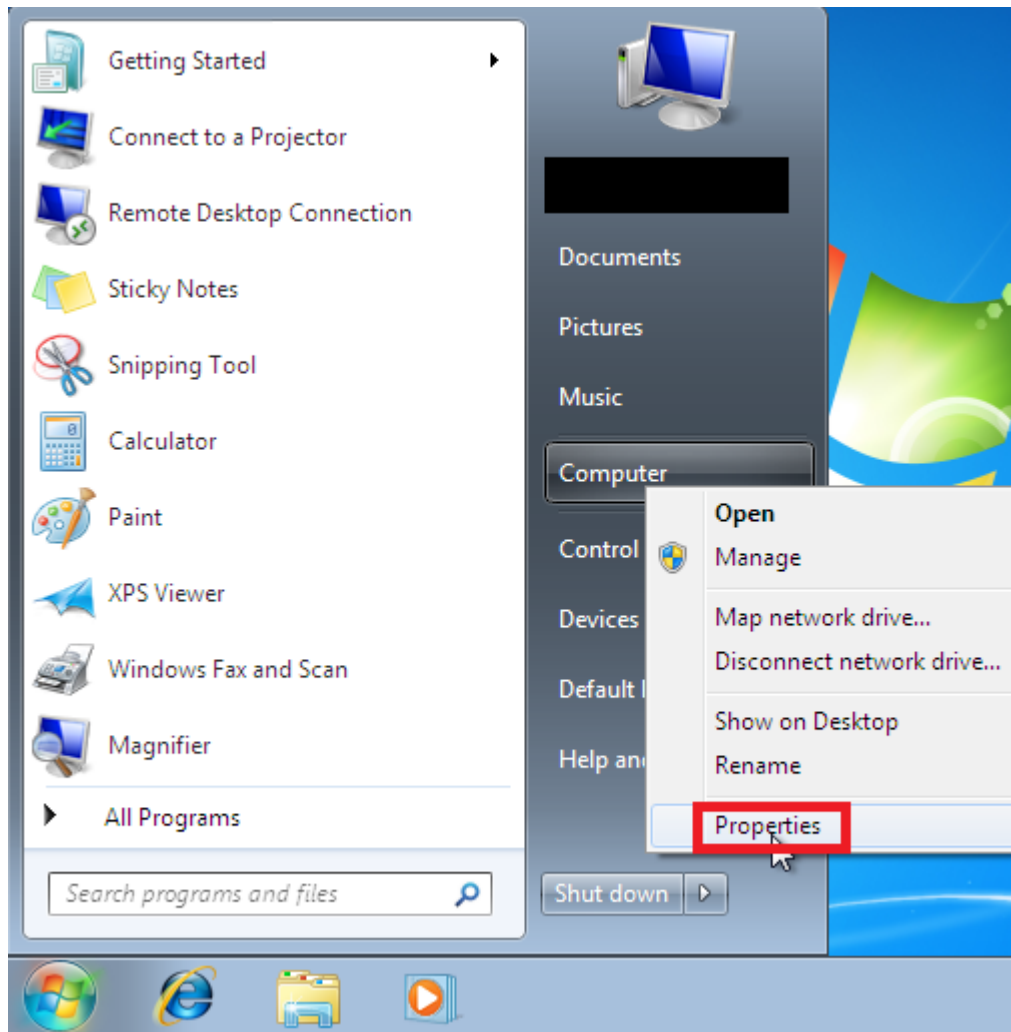
6.10

Right-click [Computer].



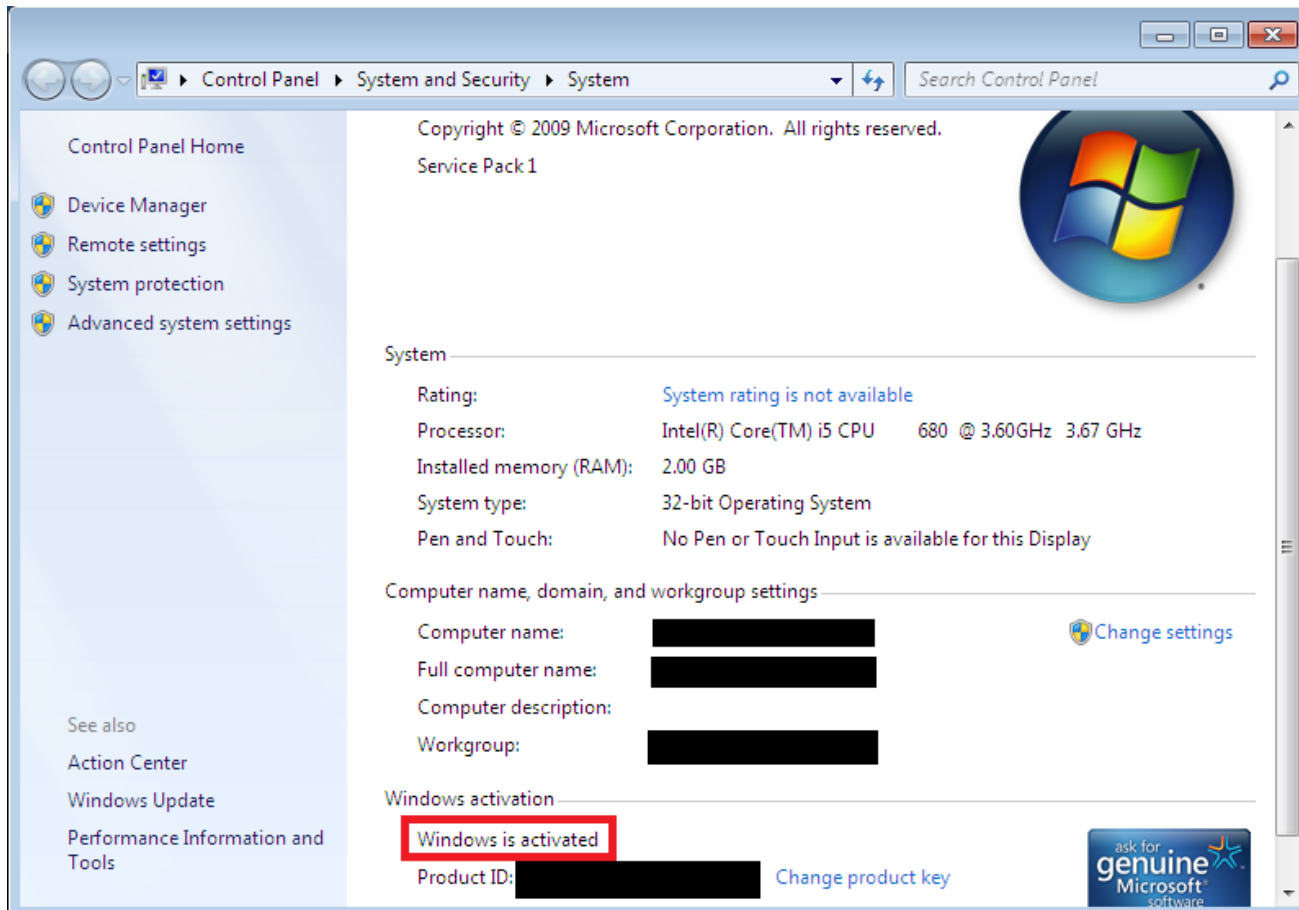
6.11

Click [Properties].



6.12

Confirm that this gives you the “Windows is activated” message.



6.13

Delete the TTInstaller which was downloaded at 6.1.