

Be sure to go to the following page and check terms and conditions for how you can use software.

Notandum(Windows 11)

http://www.officesoft.gsic.titech.ac.jp/pdf/Notandum_Licensing_Windows_11_Upgrades_through_ES_English.pdf

1 Check system requirements

Go to the following page and make sure that the university-owned PC on which you want to install Windows 11 Education Version 24H2 meets system requirements.

Windows 11 Specs and System Requirements

<https://www.microsoft.com/en-us/windows/windows-11-specifications>

2 Decide who to be PC Administrator

<Reference>

PC Administrator

http://www.officesoft.gsic.titech.ac.jp/pdf/PC_Administrator_en.pdf

3 Obtain a Passcode

PC Administrator who was decided at “2 Decide who to be PC Administrator” obtains a Passcode.

パスコードの取得について / For information about obtaining the Passcode

<http://www.officesoft.gsic.titech.ac.jp/pdf/passcode.pdf>

If person who will follow the following steps is not PC Administrator who was decided at “2 Decide who to be PC Administrator”, PC Administrator turn over the information of PC Administrator’s mail address of The Tokyo Tech Mail System and Passcode to person who will follow the following steps.

4 Make installation media to install Windows 11 Education Version 24H2ⁱ

4.1

If the OS of the PC which are used to download ISO file which you need to make installation media to install Windows 11 Education Version 24H2 is Windows, go to the following page and download TTInstaller for Windows.

TTInstaller(Windows 版)をダウンロードする方法 / How to download TTInstaller for Windows

http://www.officesoft.gsic.titech.ac.jp/pdf/How_to_download_TTInstaller_for_Windows.pdf

If the OS of the PC which are used to download ISO file which you need to make installation media to install Windows 11 Education Version 24H2 is macOS, go to the following page and download TTInstaller for macOS.

TTInstaller(macOS 版) をダウンロードする方法 / How to download TTInstaller for macOS

http://www.officesoft.gsic.titech.ac.jp/pdf/How_to_download_TTInstaller_for_macOS.pdf

4.2

4.2.1

If TTInstaller for Windows was downloaded at 4.1, follow steps in the following page.

How to execute TTInstaller for Windows (Common steps)

http://www.officesoft.gsic.titech.ac.jp/pdf/How_to_execute_TTInstaller_for_Windows_common_steps_en.pdf

If TTInstaller for macOS was downloaded at 4.1, follow steps in the following page.

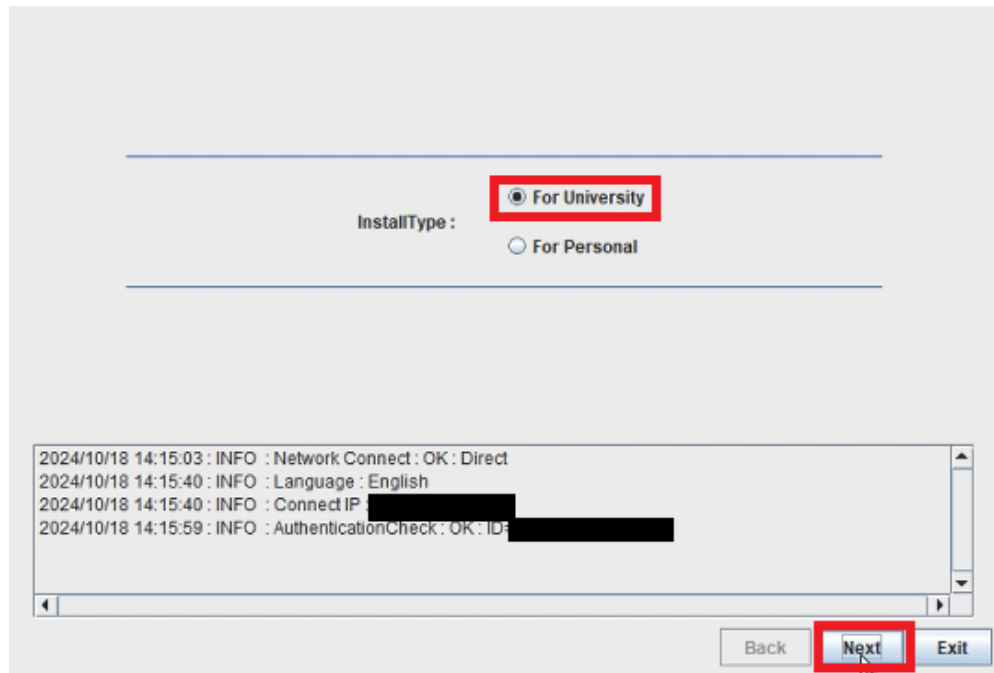
How to execute TTInstaller for macOS (Common steps)

http://www.officesoft.gsic.titech.ac.jp/pdf/How_to_execute_TTInstaller_for_macOS_common_steps_en.pdf

ⁱ It is not necessary to do "4 Make installation media to install Windows 11 Education Version 24H2" on the PC which you want to install Windows 11 Education Version 24H2 on at "5 Install Windows 11 Education Version 24H2". For example, if you can not do "4 Make installation media to install Windows 11 Education Version 24H2" on the PC which you want to install Windows 11 Education Version 24H2 on at "5 Install Windows 11 Education Version 24H2", please consider doing "4 Make installation media to install Windows 11 Education Version 24H2" on the other PC.

4.2.2

Click [For University], and click [Next].



4.2.3

Type the mail address of The Tokyo Tech Mail System of PC Administrator who was decided at “2 Decide who to be PC Administrator” and the Passcodeⁱⁱ which was obtained at “3 Obtain a Passcode”, and click [Next].

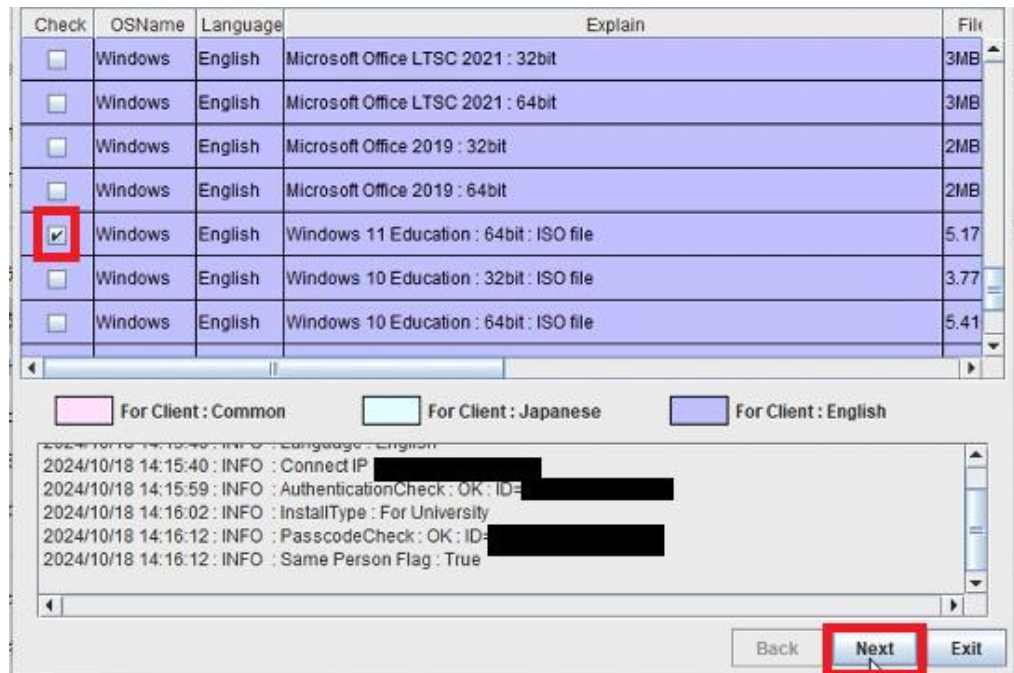


ⁱⁱ If the Passcode which was obtained at “3 Obtain a Passcode” is invalid, follow the operation of “3 Obtain a Passcode” again and type it.

4.2.4

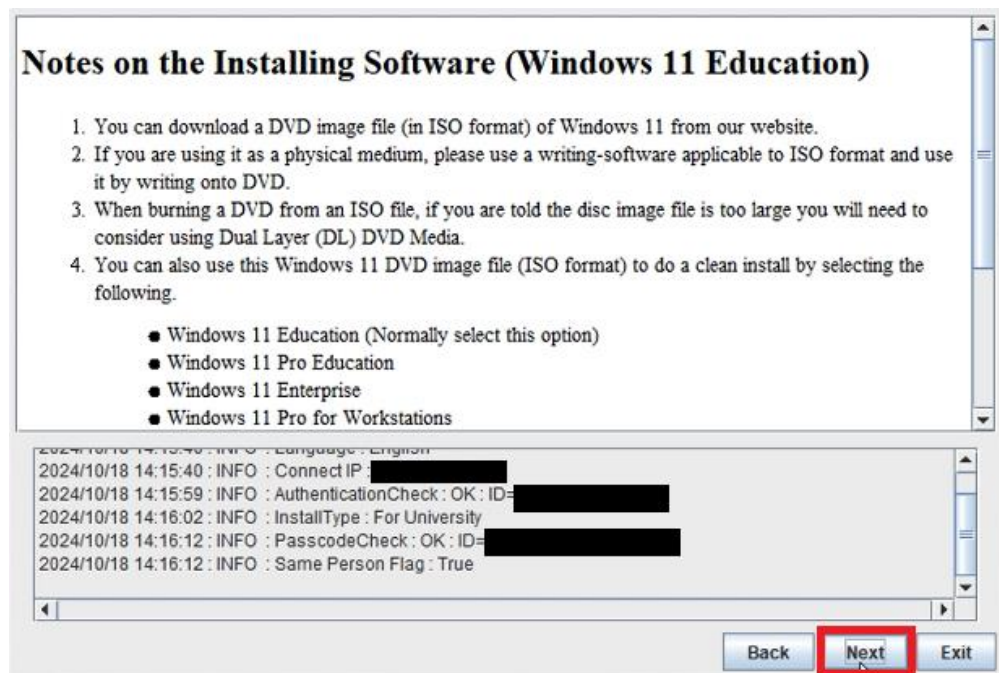
Check the row which fulfills following conditions, and click [Next].

- The Language column of the row is the language you want to install.
- The SoftwareName column of the row is “Microsoft Windows”.
- The Version column of the row contains “11 Education version 24H2”.



4.2.5

Click [Next].



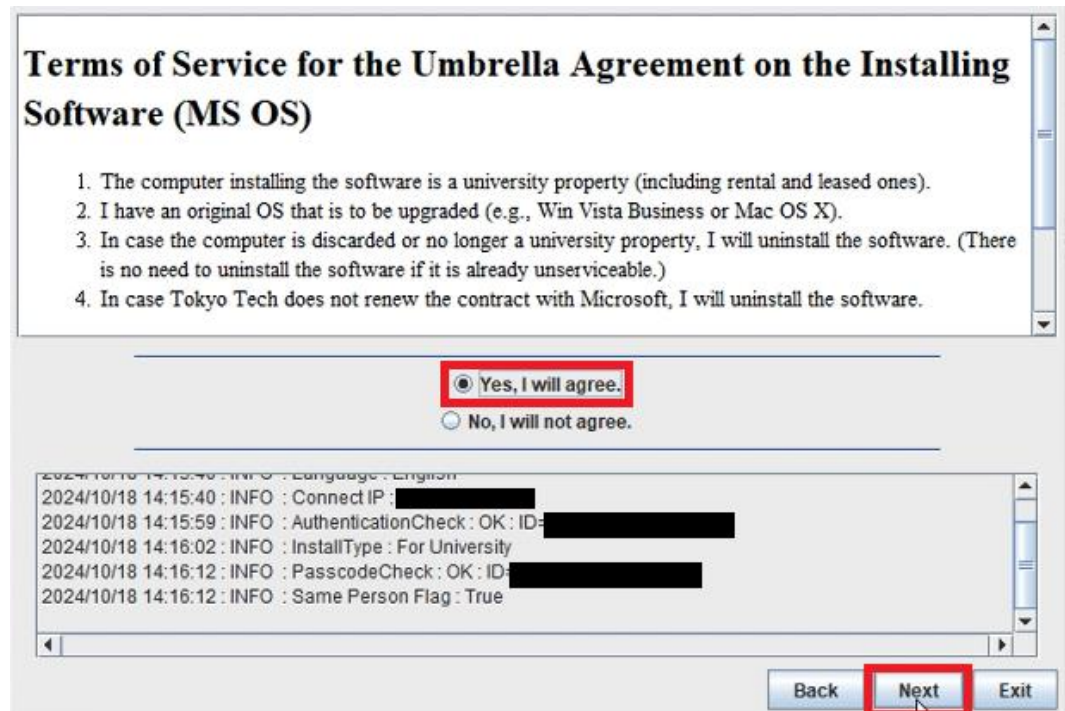
4.2.6

If you want to change the folder to save ISO file which you need to make in stallation media to install Windows 11 Education Version 24H2, click [Change t he folder to save downloaded file]. Click [Next].



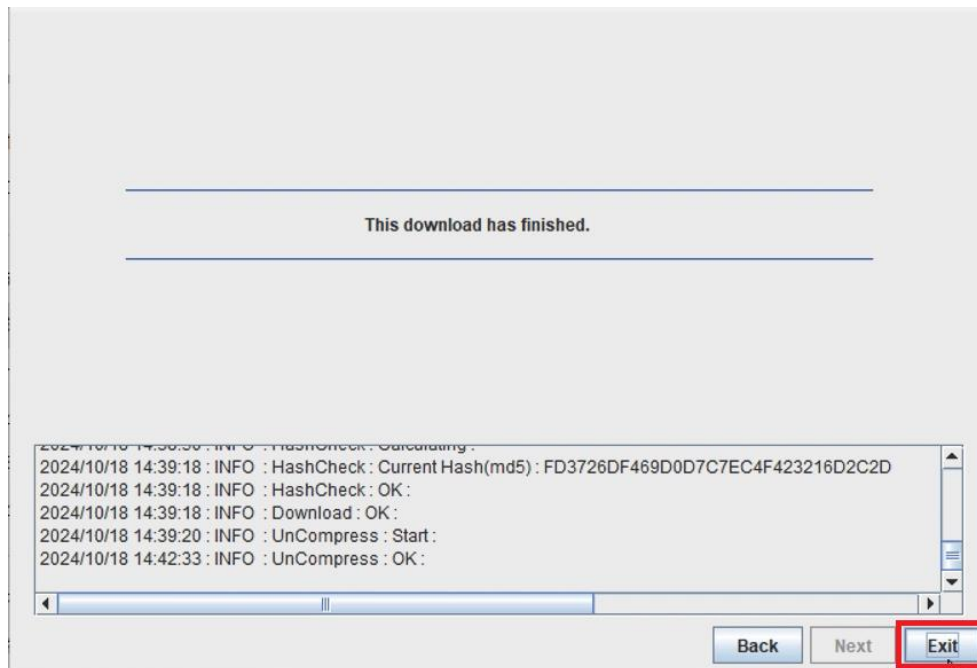
4.2.7

Click [Yes, I will agree.], and click [Next].



4.2.8

After seeing the message: *This download has finished.*, click [Exit].



4.3

Delete the TTInstaller which was downloaded at 4.1.

4.4

Make the installation media from the ISO file which was downloaded at 4.2.ⁱⁱⁱ

<Reference>

ISO ファイル書き込みガイド (Win 7 以降の OS 向け)

http://download.microsoft.com/download/1/4/4/1444FA7E-E14C-4A2F-8795-6CD35D38AA95/ISO_file_Writing_Guide.pdf

"How do I use ISO image file software to download and save ISO image file to a CD-R or a DVD-R disk?"

<https://learn.microsoft.com/en-us/microsoft-365/commerce/licenses/downloads-faq?view=o365-worldwide#how-do-i-use-iso-image-file-software-to-download-and-save-iso-image-file-to-a-cd-r-or-a-dvd-r-disk->

ⁱⁱⁱ When burning a DVD from an ISO file, if you are told the disc image file is too large you will need to consider using Dual Layer (DL) DVD Media.

5 Install Windows 11 Education Version 24H2

Install Windows 11 Education Version 24H2 on the university-owned PC which met system requirements at “1 Check system requirements” by using the installation media which was made at “4 Make installation media to install Windows 11 Education Version 24H2”.

Please be careful not to install Windows 11 other than Education or Pro Education.

6 Execute Windows 10/11 Education : Activation Tool^{iv}

6.1

Follow steps in the following page.

TTInstaller(Windows 版)をダウンロードする方法 / How to download TTInstaller for Windows

http://www.officesoft.gsic.titech.ac.jp/pdf/How_to_download_TTInstaller_for_Windows.pdf

6.2

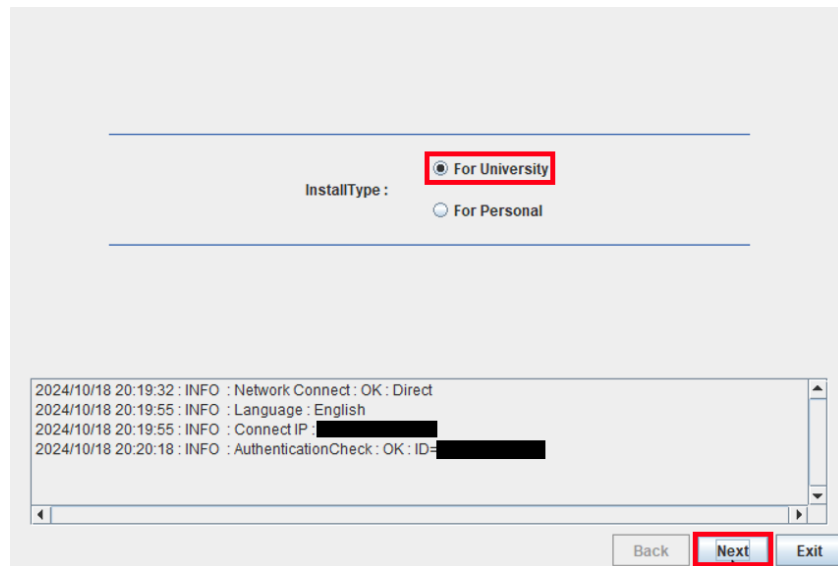
Follow steps in the following page.

How to execute TTInstaller for Windows (Common steps)

http://www.officesoft.gsic.titech.ac.jp/pdf/How_to_execute_TTInstaller_for_Windows_common_steps_en.pdf

6.3

Click [For University], and click [Next].



^{iv} Before you follow this operation, you need to get the university-owned PC which was installed Windows 11 Education at “5 Install Windows 11 Education Version 24H2” to the Internet. You need to follow this operation on it.

6.4

Type the mail address of The Tokyo Tech Mail System of PC Administrator who was decided at “2 Decide who to be PC Administrator” and the Passcode^v which was obtained at “3 Obtain a Passcode”, and click [Next].

PC Administrator's mail address [redacted]@m.titech.ac.jp

Passcode [redacted]

2024/10/18 20:19:32 : INFO : Network Connect : OK : Direct
 2024/10/18 20:19:55 : INFO : Language : English
 2024/10/18 20:19:55 : INFO : Connect IP : [redacted]
 2024/10/18 20:20:18 : INFO : AuthenticationCheck : OK : ID=[redacted]
 2024/10/18 20:20:24 : INFO : InstallType : For University

Back Next Exit

6.5

Check the row the Explain column of which is “Windows 10/11 Education : Activation Tool” and click [Next].

Check	OSName	Language	Explain	File
<input type="checkbox"/>	Windows		Microsoft Office LTSC 2021 : Activation Tool	1MB
<input type="checkbox"/>	Windows		Microsoft Office 2019 : Activation Tool	1MB
<input checked="" type="checkbox"/>	Windows		Windows 10 / 11 Education : Activation Tool	1MB
<input type="checkbox"/>	Windows		Adobe Creative Cloud ENT : Shared Device License : CC2022 : 64bit/x64	1.12
<input type="checkbox"/>	Windows		Sophos Anti-Virus Software : University-owned PC	825K
<input type="checkbox"/>	Windows		Sophos Anti-Virus Software : Individually-owned PC : 2024	995K

For Client : Common For Client : Japanese For Client : English

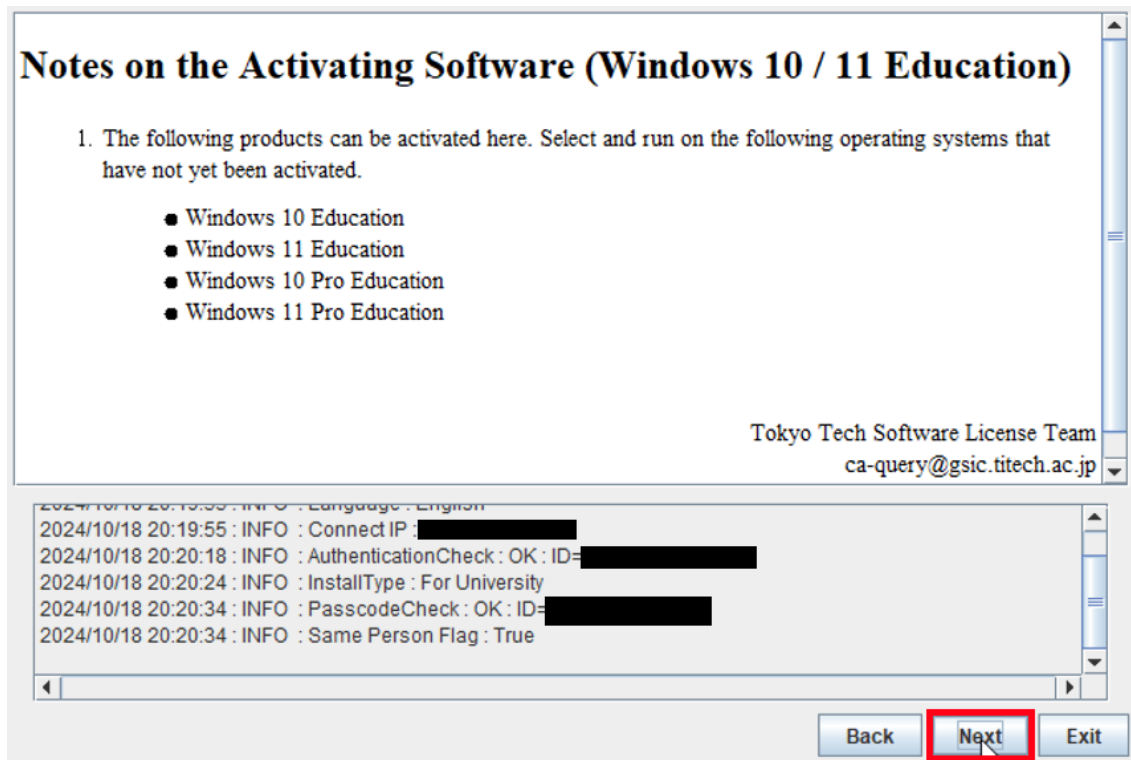
2024/10/18 20:19:55 : INFO : Language : English
 2024/10/18 20:19:55 : INFO : Connect IP : [redacted]
 2024/10/18 20:20:18 : INFO : AuthenticationCheck : OK : ID=[redacted]
 2024/10/18 20:20:24 : INFO : InstallType : For University
 2024/10/18 20:20:34 : INFO : PasscodeCheck : OK : ID=[redacted]
 2024/10/18 20:20:34 : INFO : Same Person Flag : True

Back Next Exit

^v If the Passcode which was obtained at “3 Obtain a Passcode” is invalid, follow the operation of “3 Obtain a Passcode” again and type it.

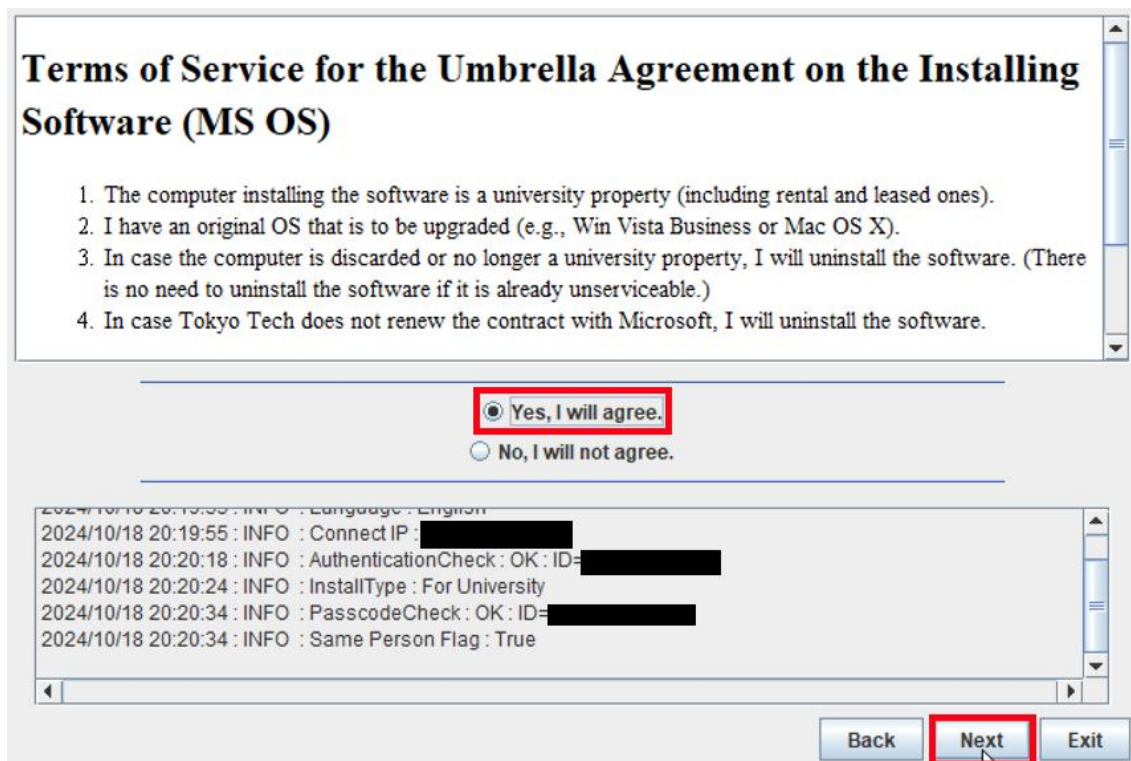
6.6

Click [Next].



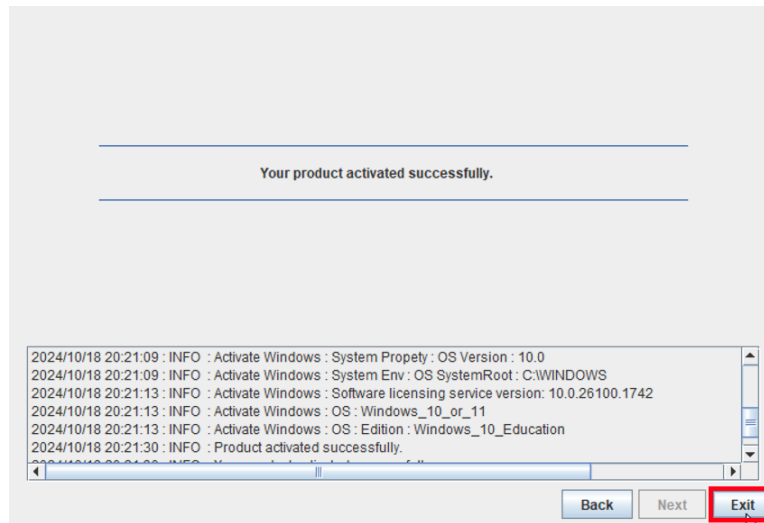
6.7

Click [Yes, I will agree.], and click [Next].



6.8

After seeing the message: *Your product activated successfully.*, click [Exit].



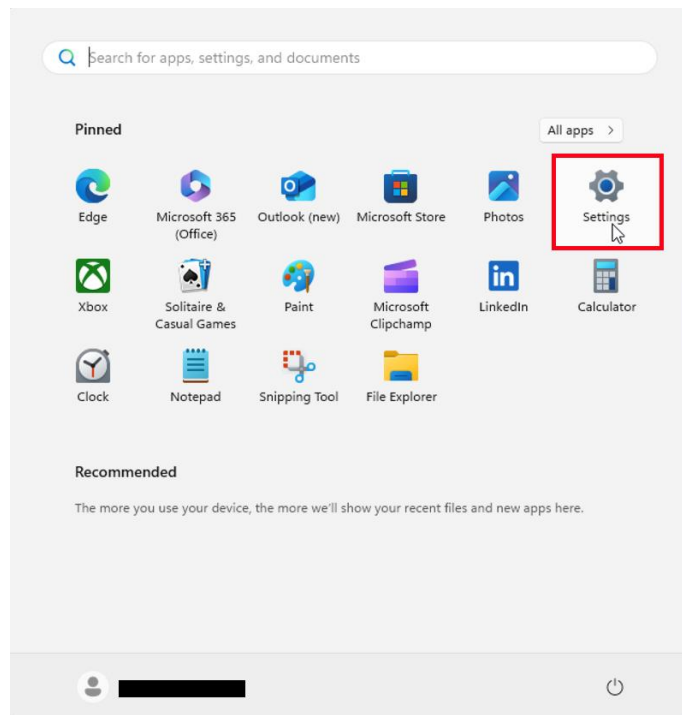
6.9

Click the Start button.



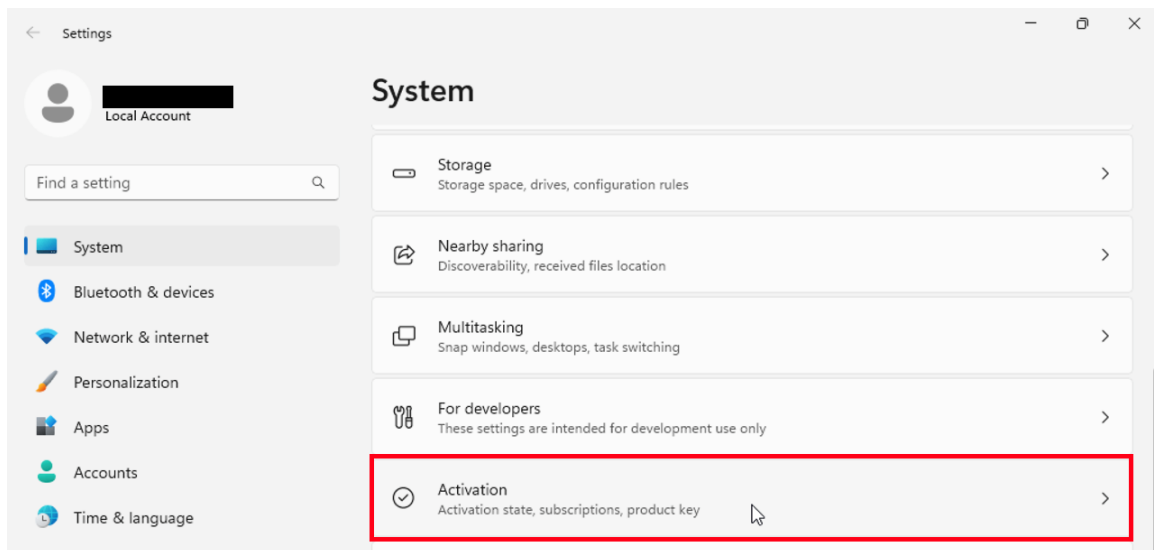
6.10

Click [Settings].



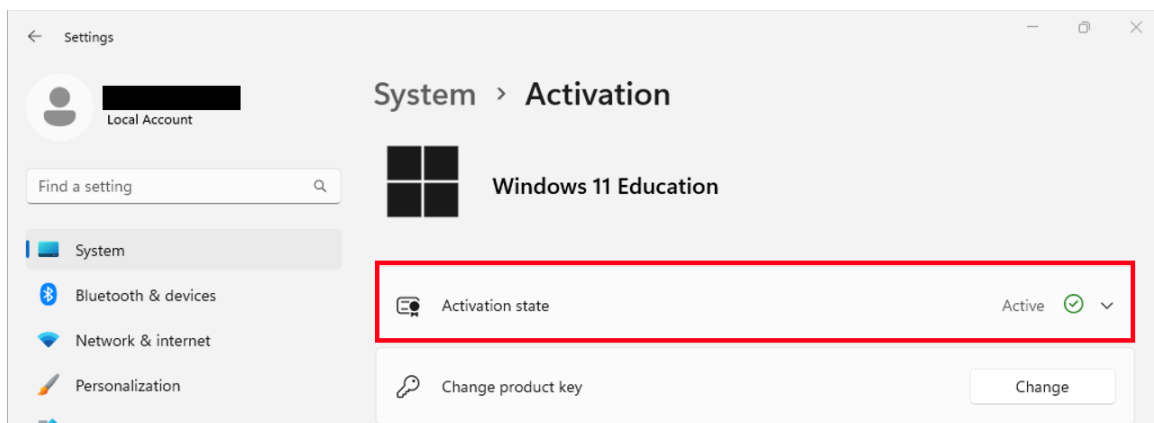
6.11

Click [Activation].



6.12

Confirm that this gives you the “Active” message.



6.13

Delete the TTInstaller which was downloaded at 6.1.